

ABOUT REYNAERS ALUMINIUM

Reynaers Aluminium is a leading European provider of innovative and sustainable architectural aluminium solutions. These include a wide variety of window and door systems, curtain walling, sliding systems, sun screening, conservatories, skylights, screens and systems to incorporate blinds and ventilation grids. Established in 1965 and headquartered in Duffel (Belgium), Reynaers Aluminium has offices in more than 30 countries worldwide.



CONCEPT FOLDING

CF 77
CF 77-SL

WE BRING ALUMINIUM TO LIFE

REYNAERS ALUMINIUM N.V.

Oude Liersebaan 266, B-2570 Duffel
T +32 15 30 85 00 • F +32 15 30 86 00
www.reynaers.com - info@reynaers.com



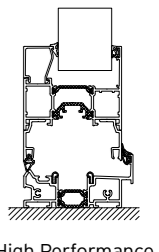
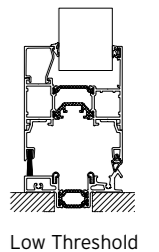
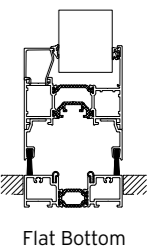
Innovative functional and technical features :

- Highly insulating (Uw-values (*) up to 1.2 W/m²K for an element size of 4000 x 2700mm)
- 2 to 8 vent combinations
- Large vent sizes (up to 1200 x 3000mm)
- In- and outward opening using the same profiles
- The first vent has a window or door functionality
- Integrated and centrally build-in rolling system
- 3 bottom solutions corresponding with 3 AWW performance levels

(*) Ug-value = 0,6 W/m²K

Uf-values:

- CF 77 : between 2.22 W/m²K and 3.50 W/m²K
- CF 77-SL : between 2.29 W/m²K and 3.47 W/m²K



REYNAERS, BEST IN CLASS.

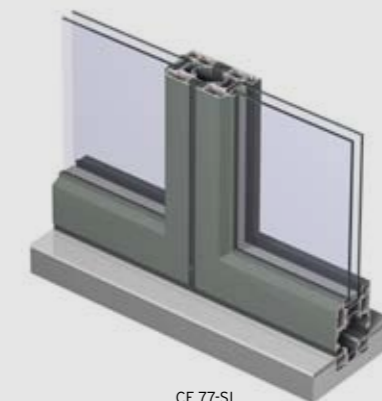
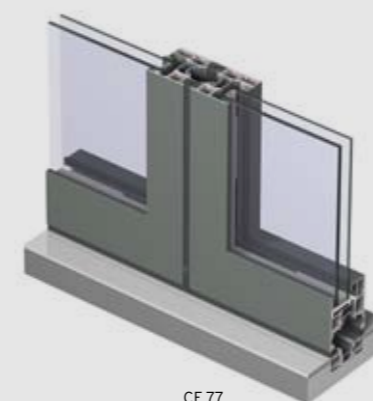
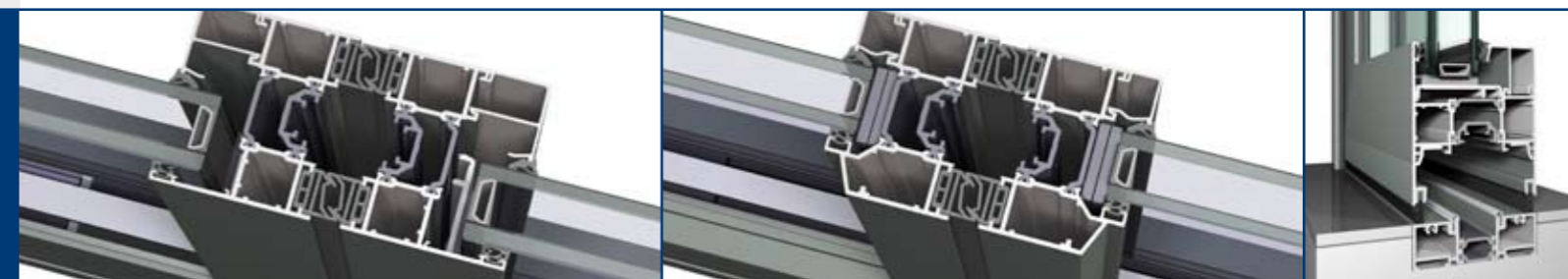
Based upon an in-depth analysis, we compared the Reynaers Concept Folding systems with the best available alternatives in the market.

	Max. vent size (mm)	Max. vent weight	Uw (W/m ² K) (3-panel) 2700 x 2300 mm	Visible width vent-vent sect.
Reynaers CF 77	1200x3000	120kg	1.34-1.54	144mm
Reynaers CF 77-SL	1200x3000	120kg	1.30-1.46	122mm

CONCEPT FOLDING 77 : ENJOY ALL SEASONS

The new Reynaers Concept Folding 77 is a completely new designed standalone folding system with unique features in comparison with other systems available in the market. With CF 77, Reynaers gives one of the most reliable answers to the increasing demand from end-users and architects for window systems that enlarge spaces and provide an esthetical 'state of the art' solution. As a result, the principal advantages of the CF 77 system are openness and large dimensions as well as flexibility, meeting the highest demands regarding insulation.

Two vent profile designs are available : Functional Style (CF 77) and Slim Line (CF 77-SL). These can be installed using three bottom solutions : Flat Bottom, Low Threshold and High Performance. Because of the system's construction depth of 77mm, it is compatible with the existing Reynaers CS product range.



Flat Bottom solution