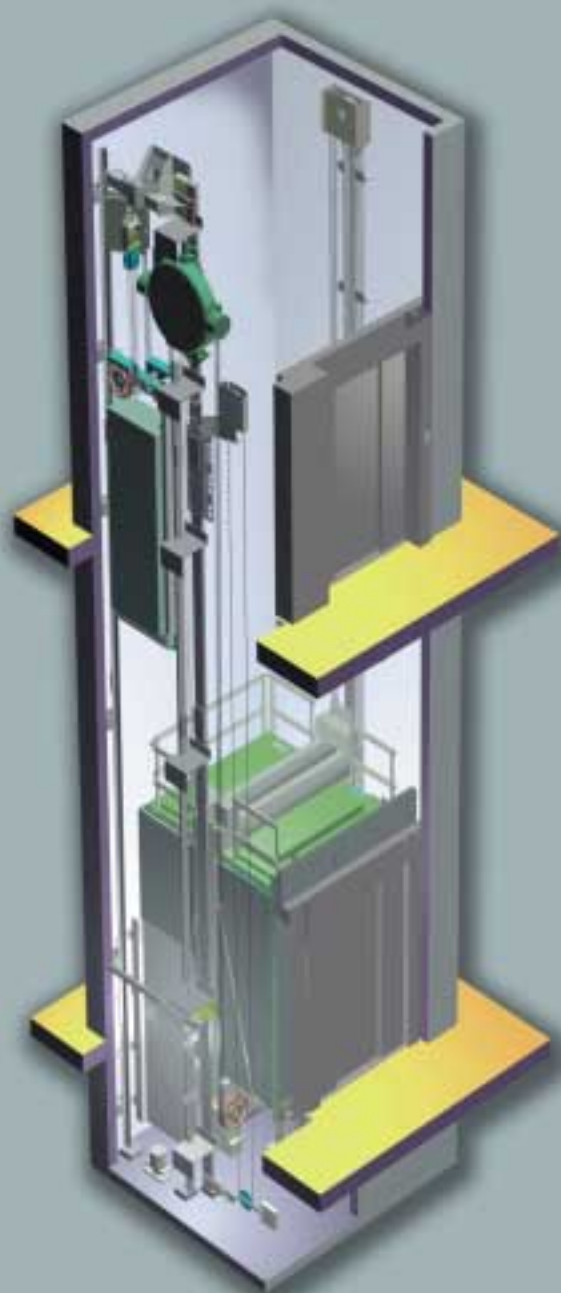


*The heart of your building™*



# ***KONE TranSys™***

*Machine-room-less freight elevator*





## ***KONE – full line of quality products and services.***

**With over 150 operating units world-wide KONE is one of the major elevator and escalator companies, the recognized innovator and technology leader of the vertical transportation industry.**

Our strength is our total concentration on vertical transportation equipment and related services. We design, manufacture and install a complete range of elevators, escalators and autowalks and provide supporting planning, maintenance and modernisation services.

Besides innovative technology, experience and know-how, we add value to your planned and existing buildings by seamless co-operation, on-schedule deliveries and efficient site performance.



## The world's first machine-room-less freight elevator

'No machine room' gives you three advantages:

- Easier positioning of elevators into building plans.
- Total elevator cost is reduced by the cost of the machine room.
- Frees up to 30 m<sup>3</sup> more building space for better, more profitable use.

### Versatile workhorse

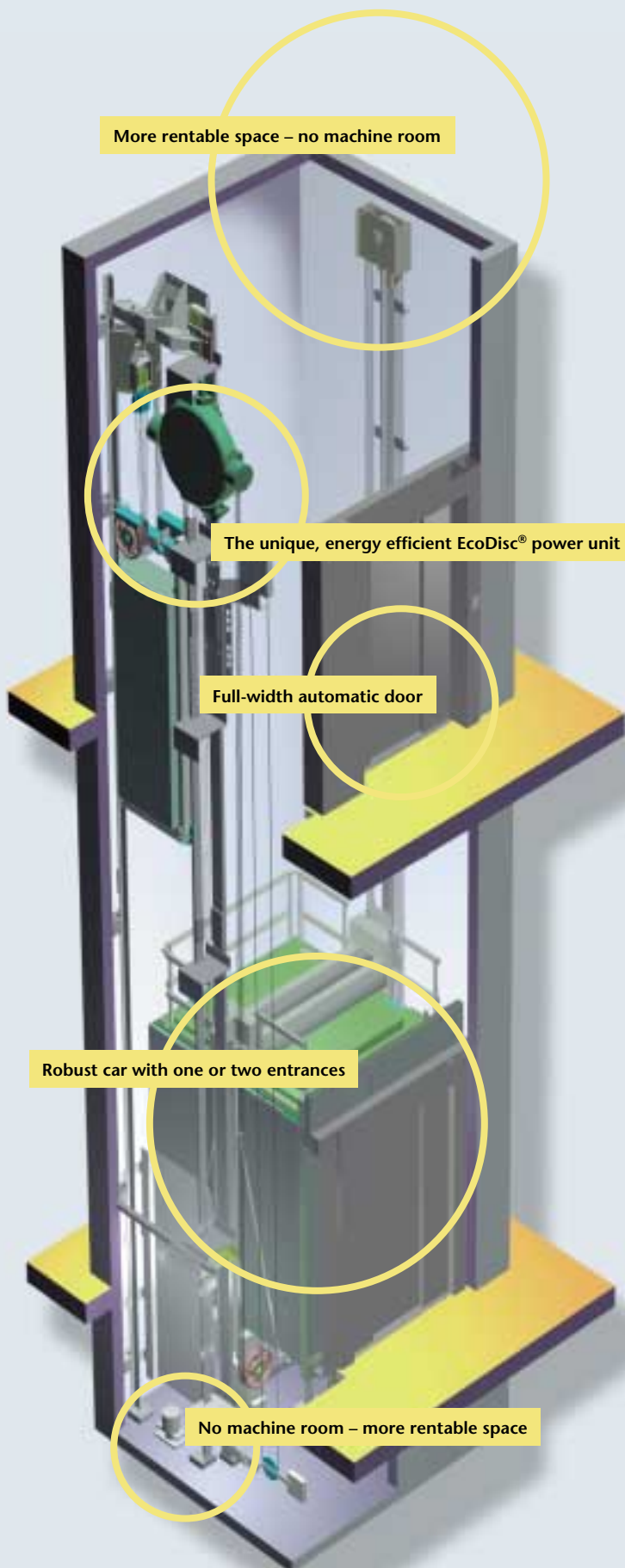
Supermarkets, shopping malls, passenger terminals, warehouses, hospitals, hotels – the innovative, machine-room-less **KONE TranSys™** elevator offers a new, better solution for a multitude of vertical freight transportation tasks.

Powered by the gearless KONE EcoDisc® machine, the **KONE TranSys™** features quiet operation, smooth runs to protect fragile loads and +/- 5 mm levelling accuracy to facilitate loading and unloading. The full-width automatic doors make the elevator fast, safe and easy to use.

In buildings of 2 to 6 floors (max.12), the 1000 to 2000 kg capacity **KONE TranSys™** elevators are a superior selection over conventional hydraulic and traction types.

### The only elevator technology that meets all requirements

The numerous different types of traction and hydraulic elevators are needed only because their cost or performance limits their application. KONE EcoDisc® based elevators sum up their strong points, **providing the first consistent, uniform solution to all vertical transportation tasks throughout buildings.**



More rentable space – no machine room

The unique, energy efficient EcoDisc® power unit

Full-width automatic door

Robust car with one or two entrances

No machine room – more rentable space



## *Purpose-designed freight elevator*

**The KONE TranSys™ cars and doors are built for the job.**

The car is finished in stainless, zinc coated or stove enamelled steel, protected by buffer rails and equipped with direct, fluorescent lighting.

The flooring is linoleum, steel, stainless steel, aluminium or rubber. The tough stainless steel car operating panel is flush with the wall surface. The door sills are aluminium or stainless steel.

A second car operating panel is optional and combined with a 400 mm minimum floor-to-floor distance to suit through-car applications.

With view to large units of load the **KONE TranSys™** is equipped with full-width, automatic side or centre-opening doors, which retract fully for loading and unloading. Further door area protection includes a 'curtain of light'. The strong double skin door panels are finished in stainless, zinc coated or enamelled steel.



## *Main specification:*

### *KONE TranSys™*

Load capacity	<b>1000, 1275, 1600, 2000 kg</b>
Speed	<b>0.5 m/s</b>
Max. travel	<b>20 m</b>
No. of floors	<b>2 to 6, max. 12 landings</b>
Control	<b>Automatic push button Down or full collective</b>
Group size	<b>Simplex or duplex</b>
Hoisting machine	<b>Gearless EcoDisc®</b>
Doors	<b>Automatic centre or side opening</b>
Car/door height	<b>2100 to 2400 mm (steps of 100 mm)</b>
Code compliance	<b>EU directive 95/16/EU; EN81-1:1998 Doors ISO/DIS 4190-2:1998, class IV or ISO/FDIS 4190-1:1999, class III</b>

## KONE EcoDisc®: The energy miracle. The heart of TranSys™

KONE elevators powered by this remarkable hoisting machine invention offer a unique set of advantages: **Better space efficiency, reduced total elevator cost, lower long-term operating economy and proven reliability.**

The KONE EcoDisc® technology combines permanent magnet synchronous motor (PMSM) technology with frequency control and axial, low friction gearless construction. The design is well proven with thousands in use. The low-revving machine has just one main moving part to guarantee a long life and reliable operation.

### Super-compact

The disc-shaped KONE EcoDisc® weighs only half of conventional power units. The compact size facilitates the machine-room-less, space efficient TranSys™ layout.

### Energy efficient

The KONE EcoDisc® needs only half of the power used by comparable conventional systems, saving thousands of kilowatt hours annually. As a traction machine, KONE EcoDisc® removes oil fumes and the potential spillage and fire risks of hydraulic systems. Elevators powered by KONE EcoDisc® are the choice for modern buildings designed for minimum environmental impact.

### Smooth and safe ride

Elevators powered by KONE EcoDisc® are exceptionally smooth and quiet in operation. Controlled starts and stops and excellent levelling accuracy means safety and ease of use.



## Superior performance:

## KONE TranSys™ powered by KONE EcoDisc®

2000 kg freight elevator	Conventional hydraulic type	Gearless TranSys™
Speed (m/s)	0,6	0,5
Motor power (kW)	28	6
Starting current (Amp)	112 S/D	18
Main fuse size (Amp)	63	16
Power consumption (kWh) • 100 000 starts/year	10400	4800
Thermal losses (kW)	5,8	1,1
Oil requirements (l)	240	0
Noise (dBA) <sup>1</sup>	Typical 70	Less than 55
Machine room (m <sup>2</sup> )	6	No machine room

<sup>1</sup> 1 m distance from the machine

## Operating fixtures

For strength and reliability, **KONE TranSys™** features stainless steel encased landing fixtures, metallic push buttons are aluminium and long-life LED (Light Emitting Diode) indicator lights. Security and access control options include key switches.



Design Sigma

## Car finishes

### Floor material



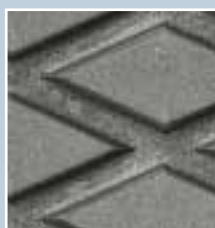
Rubber, Dark Grey



Linoleum, Slate Grey



Linoleum, Slate Blue



Chequered steel plate



Tearplate stainless steel



Tearplate aluminium

### Stainless steel wall patterns



Brushed



Quad



Linen

## KONE TranSys™: Planning data (Hoistway pit 1400 mm, headroom 3700 mm\*)

\* if clear car height 2100 mm

### Standard dimensions – car with fully opening door (DIN/DIS 4190-2:1998, class IV)

Maximum load (kg)	Car size (mm)	Through type	Shaft width (mm)	Shaft depth (mm)	Door width (mm)	Door opening
1000 kg	1300 x 1750	no	2300	2250	1300	telescope
	1300 x 1750	no	2250	2250	1300	central
	1100 x 2050	yes	2000	2600	1100	telescope
1600 kg	1400 x 2400	no	2450	2800	1400	telescope
	1400 x 2400	no	2350	2800	1400	central
	1400 x 2400	yes	2450	2950	1400	telescope
	1400 x 2400	yes	2350	2950	1400	central
2000 kg	1500 x 2700	no	2500	3100	1500	central
	1500 x 2700	yes	2500	3250	1500	central

### Standard dimensions – car with framed door (DIN/DIS 4190-2:1999, class III)

Maximum load (kg)	Car size (mm)	Through type	Shaft width (mm)	Shaft depth (mm)	Door width (mm)	Door opening
1275 kg	1200 x 2300	no	2050	2750	1100	telescope
	1200 x 2250	yes	2050	2950	1100	telescope
1600 kg	1400 x 2400	no	2350	2850	1300	telescope
	1400 x 2400	no	2300	2850	1300	central
	1400 x 2300	yes	2350	3000	1300	telescope
	1400 x 2300	yes	2300	3000	1300	central
2000 kg	1500 x 2700	no	2350	3150	1300	telescope
	1500 x 2700	no	2350	3150	1300	central
	1500 x 2600	yes	2350	3300	1300	telescope
	1500 x 2600	yes	2350	3300	1300	central



## **KoneXion® voice/datalink services**

Providing elevators with permanent means of communication with rescue services is a mandatory requirement within the EU. As all KONE elevators, the **KONE TranSys™** units can be linked to KoneXion®, KONE maintenance communication network, enabling direct voice and data links 24 hours a day to ensure the highest level of user safety and elevator operating reliability:

- **Voice communication for service/emergency calls from the car**
- **Automatic remote monitoring of the general state and operation of the elevator.**
- **Regular elevator status reports from KONE service centre.**

## **Full regulatory compliance**

- **Directive 95/16/EC (mandatory within the EU):**

Aims at improving protection against accidents and the safety of elevator passengers as well as installation and maintenance personnel. The requirements for elevator design and equipment include the prevention of unintended car movements and overload situations, improvement of access for handicapped passengers and the provision of permanent communication with rescue services.

- **89/336/EEC (mandatory)** regulates the electro-magnetic interference (EMI) with regard to emissions from elevator components and the irradiation resistance requirements.

- **89/106/EEC (voluntary)** Recommendation concerning the design of products to improve their energy consumption and the operating safety as well as the reduction of noise, vibration and risk of fire.



[www.kone.com](http://www.kone.com)