



## LDG-M4 Compact Housing

**ERMEC, S.L. BARCELONA**  
 C/ Francesc Teixidó, 22  
 E-08918 Badalona  
 (Spain)



**Tel.: (+34) 902 450 160**  
**Fax: (+34) 902 433 088**  
[info@ermec.com](mailto:info@ermec.com)  
[www.ermec.com](http://www.ermec.com)

**ERMEC, S.L. MADRID**  
 C/ Sagasta, 8, 1ª planta  
 E-28004 Madrid  
 (Spain)

**PORTUGAL**  
[portugal@ermec.com](mailto:portugal@ermec.com)  
**BILBAO**  
[bilbao@ermec.com](mailto:bilbao@ermec.com)

[www.erni.com](http://www.erni.com)



**ERMEC, S.L. BARCELONA**  
C/ Francesc Teixidó, 22  
E-08918 Badalona  
(Spain)



**Tel.: (+34) 902 450 160**  
**Fax: (+34) 902 433 088**  
[info@ermec.com](mailto:info@ermec.com)  
[www.ermec.com](http://www.ermec.com)

**ERMEC, S.L. MADRID**  
C/ Sagasta, 8, 1ª planta  
E-28004 Madrid  
(Spain)

**PORTUGAL**  
[portugal@ermec.com](mailto:portugal@ermec.com)  
**BILBAO**  
[bilbao@ermec.com](mailto:bilbao@ermec.com)

[www.erni.com](http://www.erni.com)

## LDG-M4 Compact Housing



The LDG-M4 is a plastic housing designed for industrial applications in the field of sensors. The dimensions are according to DIN EN 50041.

The waterproof housing can i.e. be used to protect proximity- or positioning switches or other electronic circuits.

The cable is fed through into the housing by a cable gland size M20 x 1.5.

On request the housing can be supplied in customer specific colors. Furthermore it is possible to create cut outs into the top or the housing for additional cable glands, connectors, LEDs, pressure sensors, etc.

### Standard note:

**DIN EN 50041** - Low voltage switchgear for industrial use; control switches; position switches 42.5 x 80; dimensions and characteristics

ERMEC, S.L. BARCELONA  
C/ Francesc Teixidó, 22  
E-08918 Badalona  
(Spain)



Tel.: (+34) 902 450 160  
Fax: (+34) 902 433 088  
[info@ermec.com](mailto:info@ermec.com)  
[www.ermec.com](http://www.ermec.com)

ERMEC, S.L. MADRID  
C/ Sagasta, 8, 1ª planta  
E-28004 Madrid  
(Spain)

PORTUGAL  
[portugal@ermec.com](mailto:portugal@ermec.com)  
BILBAO  
[bilbao@ermec.com](mailto:bilbao@ermec.com)

# LDG-M4 Compact Housig

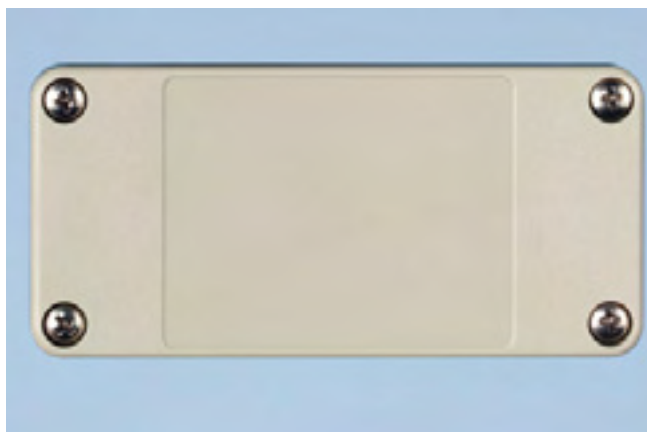
## Features



Cover with recess for printed text or rating plate (max. 49 x 38 mm).  
An area of 40 x 30 mm can be used for cut outs e.g. for connectors or LED-displays.

**Note:**

The parts used have to meet IP 65/67 standards in conjunction with the housing.



Cover with water- and oil-proof seal and fixing screws.  
The use of metal thread inserts results in a robust long-life assembly (M3).



Wall mounting is enabled by 2 diagonal arranged screw holes. The mounting grid is 60 x 30 mm. The screw holes are suitable for cylinder head screw size M5 x 40 (including usable thread length of 10 mm)

PCB fixation with 2 diagonal arranged screw holes for self-tapping screws (suitable for plastic, size 2.5 , max. torque have to be noted)

In conjunction with a 1.6 mm thick pcb, a self-tapping screw 2.5 x 6 can be used.

**ERMEC, S.L. BARCELONA**  
C/ Francesc Teixidó, 22  
E-08918 Badalona  
(Spain)



**Tel.:** (+34) 902 450 160  
**Fax:** (+34) 902 433 088  
[info@ermec.com](mailto:info@ermec.com)  
[www.ermec.com](http://www.ermec.com)

**ERMEC, S.L. MADRID**  
C/ Sagasta, 8, 1ª planta  
E-28004 Madrid  
(Spain)

**PORTUGAL**  
[portugal@ermec.com](mailto:portugal@ermec.com)  
**BILBAO**  
[bilbao@ermec.com](mailto:bilbao@ermec.com)

# LDG-M4

## Compact Housing

### Technical Data



#### Technical data

Outside dimensions	L x W x H	94 x 42 x max. 46 mm
Cable gland size		M20 x 1.5
Screw-mounting grid	DIN EN 50041	60 x 30 mm
Protection class	EN 60529	IP 65/67 complete assembled system
Assembly height Component side	PCB thickness 1.6 mm	max. 30 mm
Assembly height Solder side	PCB thickness 1.6 mm	max. 4.5 mm
Temperature range		-20 bis +70 °C

#### Material

Housing with M3 thread insert	grey RAL 7032	Makrolon 8035 30% GF UL94 V-1
Top	grey RAL 7032 transparent	Makrolon 8035 30% GF (UL94 V-1) Makrolon 2805 (UL94 V-2)
Sealing gasket		CR Neoprene
Cable gland	M20 x 1.5	Brass with Ni plating
PCB thickness	recommended	1.6 mm

#### Locking Torque

Cover screw connection M3		max. 0.4 Nm
PCB-fastening Screw size 2.5 x 6		max. 0.25 Nm
Wall fastening M5 x 40		max. 1.0 Nm

ERMEC, S.L. BARCELONA  
C/ Francesc Teixidó, 22  
E-08918 Badalona  
(Spain)



Tel.: (+34) 902 450 160  
Fax: (+34) 902 433 088  
[info@ermec.com](mailto:info@ermec.com)  
[www.ermec.com](http://www.ermec.com)

ERMEC, S.L. MADRID  
C/ Sagasta, 8, 1ª planta  
E-28004 Madrid  
(Spain)

PORTUGAL  
[portugal@ermec.com](mailto:portugal@ermec.com)  
BILBAO  
[bilbao@ermec.com](mailto:bilbao@ermec.com)

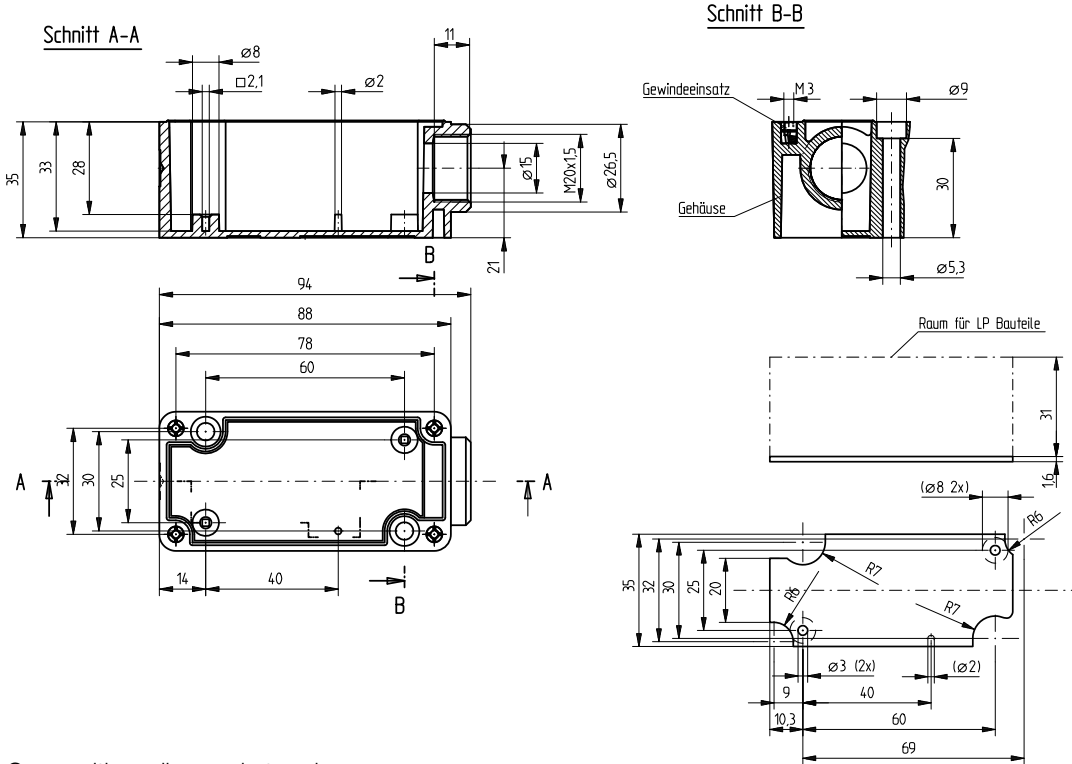
# LDG-M4 Compact Housing

## Dimensions And Ordering Information

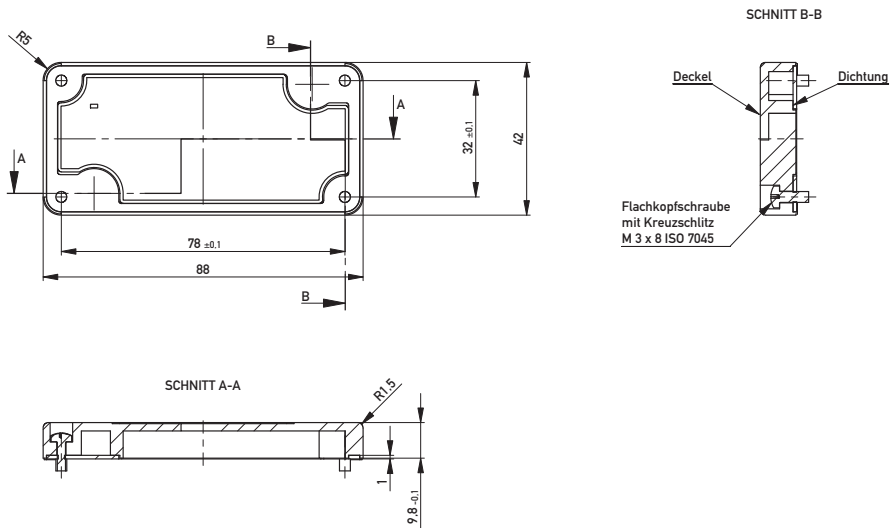


### Dimensions

Cover with thread insert



Cover with sealing gasket and screws



### Ordering Information

Description	Color	Quantity	Part Number
Housing with thread insert M3	grey	1	194564
Cover including sealing gasket and screws	grey	1	424345
Cover including sealing gasket and screws	transparent	1	424394
Cable gland M20 x 1.5 including compression screw, washer, sealing ring		1	224885



Member



VMEbus INTERNATIONAL TRADE ASSOCIATION



**ERMEC, S.L. BARCELONA**  
 C/ Francesc Teixidó, 22  
 E-08918 Badalona  
 (Spain)



**Tel.: (+34) 902 450 160**  
**Fax: (+34) 902 433 088**  
[info@ermec.com](mailto:info@ermec.com)  
[www.ermec.com](http://www.ermec.com)

**ERMEC, S.L. MADRID**  
 C/ Sagasta, 8, 1ª planta  
 E-28004 Madrid  
 (Spain)

**PORTUGAL**  
[portugal@ermec.com](mailto:portugal@ermec.com)  
**BILBAO**  
[bilbao@ermec.com](mailto:bilbao@ermec.com)

[www.erni.com](http://www.erni.com)

**ERNI Electronics GmbH**

Seestrasse 9  
73099 Adelberg/Deutschland  
Tel +49 7166 50-0  
Fax +49 7166 50-282  
info@erni.de

Europe South America Africa Japan

**ERNI Electronics, Inc.**

2201 Westwood Ave  
Richmond, VA 23230/USA  
Tel +1 804 228-4100  
Fax +1 804 228-4099  
info.usa@erni.com

North America Canada Mexico

**ERNI Asia Holding Pte Ltd.**

Blk 4008 Ang Mo Kio Avenue 10  
#04-01/02 Techplace I  
Singapore 569625  
Tel +65 6 555 5885  
Fax +65 6 555 5995  
info@erni-asia.com

Asia

**ERMEC, S.L. BARCELONA**  
C/ Francesc Teixidó, 22  
E-08918 Badalona  
(Spain)



**Tel.: (+34) 902 450 160**  
**Fax: (+34) 902 433 088**  
[info@ermec.com](mailto:info@ermec.com)  
[www.ermec.com](http://www.ermec.com)

**ERMEC, S.L. MADRID**  
C/ Sagasta, 8, 1ª planta  
E-28004 Madrid  
(Spain)

**PORTUGAL**  
[portugal@ermec.com](mailto:portugal@ermec.com)  
**BILBAO**  
[bilbao@ermec.com](mailto:bilbao@ermec.com)

[www.erni.com](http://www.erni.com)