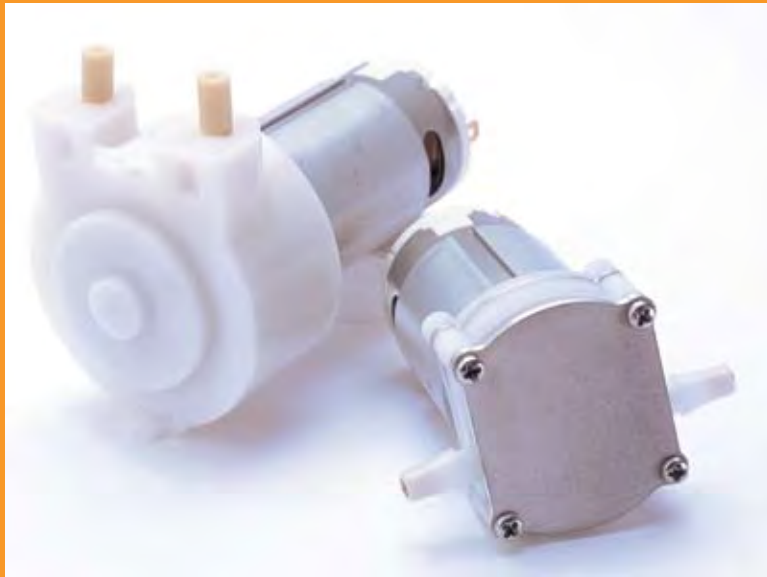


Variable Flow Pumps



Tel.: (+34) 902 450 160
Fax: (+34) 902 433 088
ermec@ermec.com
www.ermec.com



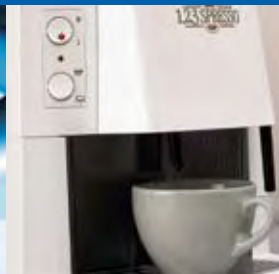
New!

#600 Series Pumps

- ▶ Optimum flow rate 900 - 1700 ml/min
- ▶ Compact & light
- ▶ Self-priming
- ▶ Maintenance free
- ▶ Optional food grade materials used

Applications:

- ▶ coffee machines
- ▶ beverage dispensing



Johnson Electric's new #600 series pump offers high precision and variable flow control capability to suit the wide range of requirements for liquid pump dispensing. Our products are designed, built, tested, packaged, and shipped to your exact specifications.

We appreciate the opportunity to collaboratively work with your design teams early in the development cycle of the application. We can respond to requirements quickly by networking our know-how across the global Johnson Electric organization and at the same time providing local support to increase efficiency, reduce costs and to streamline application development cycles. Contact us today!

Asia

6-22 Dai Shun St.
Tai Po Industrial Estate
New Territories, Hong Kong
T +852 2663 6541
F +852 2663 6112

Europe

Via Cadamosto 3
20094 Corsico, Milano
Italy
T +39 2 4869 21
F +39 2 4860 0692

North America

10 Progress Drive
Shelton, CT 06484
USA
T +1 203 4475362
F +1 203 4475383

E-mail: commercialsales@johnsonelectric.com

website: www.johnsonelectric.com



switches



solenoids



motors



innovating motion

Technical Data

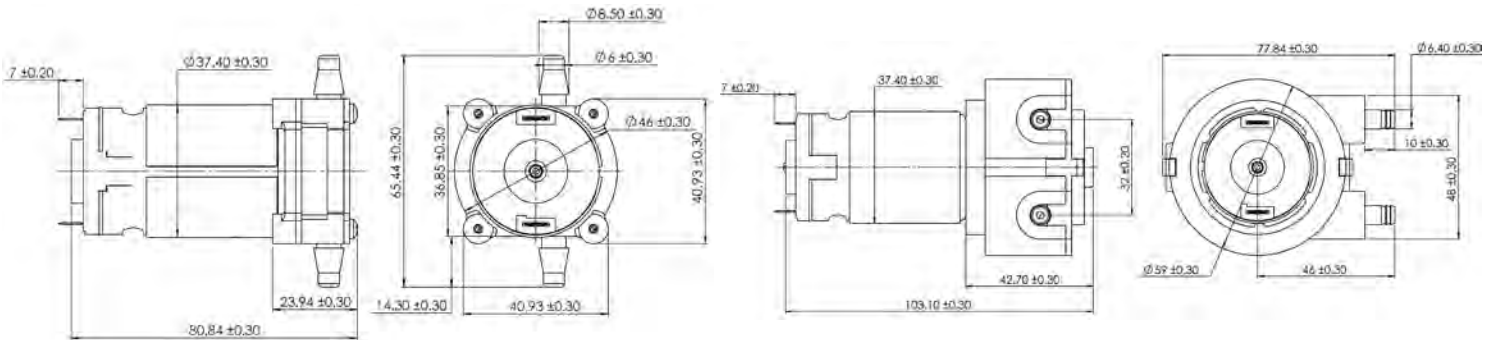


#600 Series Gear Pump

Max. Flow Rate	2000 ml/min
Discharge Pressure	87 psi (6 Bar)
Media Temperature	10 - 60 °C
Tube Size	6 mm
Weight	255 g
Dimensions	82 x 66 x 41 mm
Input Power	19 - 45 w
Supply	240 VAC/50 Hz
Media Type	liquids, water, high viscosity fluids
Other Features	adjustable flow rate reversible sanitary self-priming
Optional Feature	thermal overload protection

#600 Series Peristaltic Pump

Max Flow Rate	800 ml/min
Discharge Pressure	60 psi (4 Bar)
Media Temperature	10 - 60 °C
Tube Size	6.4 mm
Weight	310 g
Dimensions	104 x 78 x 59 mm
Input Power	25 - 45 w
Supply	240 VAC/50Hz
Media Type	liquids, water, high viscosity fluids
Other Features	adjustable flow rate reversible sanitary self-priming
Optional Feature	thermal overload protection



ERMEC, S.L. BARCELONA
C/ Francesc Teixidó, 22
E-08918 Badalona
(Spain)

Tel.: (+34) 902 450 160
Fax: (+34) 902 433 088
info@ermec.com
www.ermec.com

ERMEC, S.L. MADRID
C/ Sagasta, 8, 1ª planta
E-28004 Madrid
(Spain)

PORTUGAL
portugal@ermec.com
BILBAO
bilbao@ermec.com



6-22 Dai Shun St. Tai Po Industrial Estate, New Territories, Hong Kong

T +852 2663 6688 F +852 2897 2054 commercialsales@johnsonelectric.com www.johnsonelectric.com

innovating motion