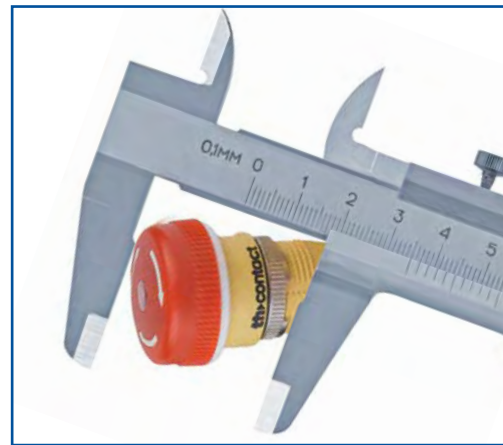


“Sometimes the installation depth is less than half a matchstick.”



When safety becomes a matter of millimetres: No problem for the E-Stop

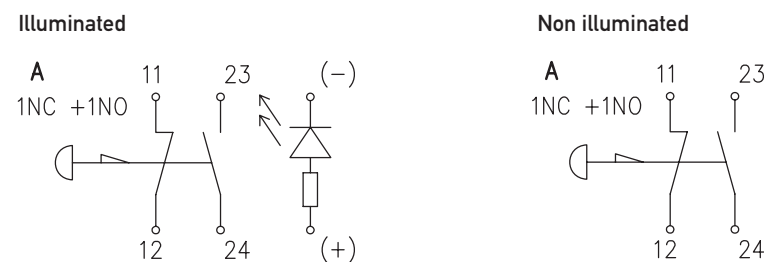


These days, the space required to accommodate extensive functionality is ever decreasing. However, large switches often stand in the way of a more compact, lower-profile equipment design. Just take the conventional, unwieldy emergency stop button as an example. With the new, super-compact E-Stop, safety from now on only requires an installation depth of less than 20 mm - and therefore considerably less than the length of half a matchstick! The E-Stop therefore opens up new avenues for slimmer and more ergonomic design - without compromising safety.

Unbeatably compact, unbeatably reliable

When it comes to safety and reliability, the E-Stop is in no way inferior to its „larger role models“. Approvals to EN 60947 with environmental protection to IP 65 levels underline the high quality standard and represent maximum reliability in daily use. Three different design styles, actuator sizes from 25 to 40 mm and optional LED illumination make the E-Stop an ideal switch solution with a wide variety of applications - ideal for remote operation, remote control systems, lifts, elevators, escalators, automatic assembly machines and portable equipment of all kinds.

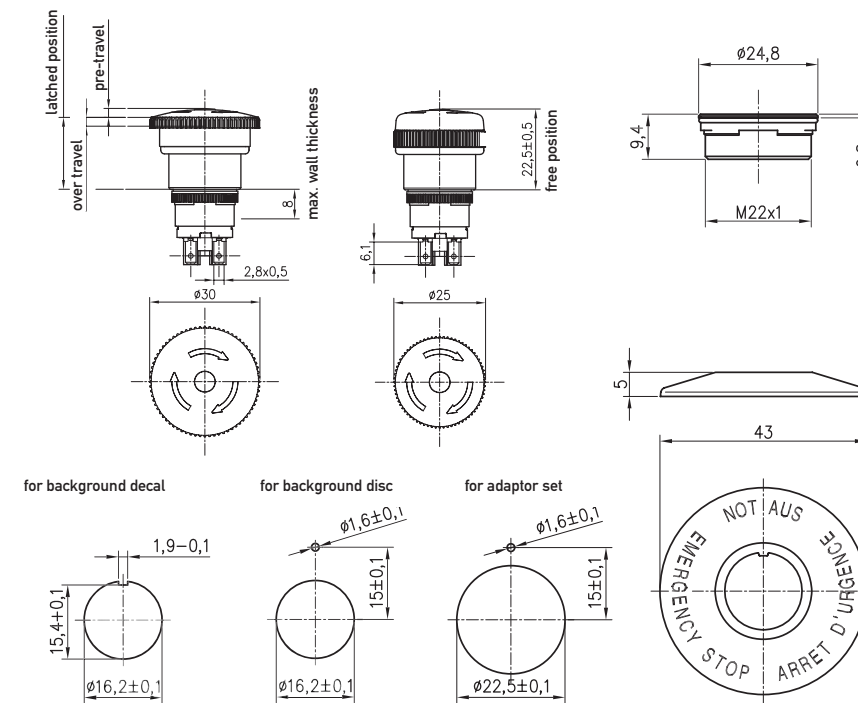
Circuit diagram



ERMEC
www.ermec.com
Distribución de componentes eléctricos y electrónicos
Tel.: (+34) 902 450 160
Fax: (+34) 902 433 088
ermec@ermec.com
www.ermec.com

Panel cut-out (mm)	ø 16.2 or ø 22.5 with adaptor
Features	<ul style="list-style-type: none"> 3 mm contact spacing Installation depth behind panel < 20 mm Twist-reset mechanism Sealed to IP 65 1NC + 1NO or 2NC switching circuits
Electrical Supply	250 VAC, 2 A
Actuator diameter (mm)	ø 25 / ø 30
Actuator knob	ø 40 / on request
Actuator style	Red mushroom head
Approvals	EN 60947-1, EN 60947-5-1, EN 60947-5-5

Facts & Figures



E-Stop:
The reliable, super-compact emergency stop button for remote operation, remote control systems, lifts, elevators, escalators, automatic assembly machines, portable equipment and many other innovative and low-profile designs.

ERMEC
www.ermec.com
Distribución de componentes eléctricos y electrónicos

Tel.: (+34) 902 450 160
Fax: (+34) 902 433 088
ermec@ermec.com
www.ermec.com

The bestsellers

Ordering reference	Panel cut-out mm	Function	Actuator mm	Illumination	Protection class	Terminals mm
TE180203101	ø 16.2	Twist-reset 1NC + 1NO	ø 25	no	IP 65	faston 2.8 x 0.5 (switching circuit)
TE180203102	ø 16.2	Twist-reset 1NC + 1NO	ø 30	no	IP 65	faston 2.8 x 0.5 (switching circuit)
TE180203201	ø 16.2	Twist-reset 1NC + 1NO	ø 25	yes	IP 65	faston 2.8 x 0.5 (switching circuit) prewired (illumination circuit)
TE180203202	ø 16.2	Twist-reset 1NC + 1NO	ø 30	yes	IP 65	faston 2.8 x 0.5 (switching circuit) prewired (illumination circuit)
TE180204101	ø 16.2	Twist-reset 2NC	ø 25	no	IP 65	faston 2.8 x 0.5 (switching circuit)
TE180204102	ø 16.2	Twist-reset 2NC	ø 30	no	IP 65	faston 2.8 x 0.5 (switching circuit)
TE180204201	ø 16.2	Twist-reset 2NC	ø 25	yes	IP 65	faston 2.8 x 0.5 (switching circuit) prewired (illumination circuit)
TE180204202	ø 16.2	Twist-reset 2NC	ø 30	yes	IP 65	faston 2.8 x 0.5 (switching circuit) prewired (illumination circuit)
TH880200029	ø 22.5	Adaptor set				

Contacts

Headquarter

Johnson Electric Holdings Limited
Johnson Building, 6-22 Dai Shun St, Tai Po Industrial Estate, New Territories
Hong Kong
T +852 2663 6688
F +852 2897 2054
e-mail: salesupport@johnsonelectric.com



ERMEC, S.L. BARCELONA
C/ Francesc Teixidó, 22
E-08918 Badalona
(Spain)

Tel.: (+34) 902 450 160
Fax: (+34) 902 433 088
info@ermec.com
www.ermec.com

ERMEC, S.L. MADRID
C/ Sagasta, 8, 1ª planta
E-28004 Madrid
(Spain)

PORTUGAL
portugal@ermec.com
BILBAO
bilbao@ermec.com

Sales offices

Asia

Shanghai, China
12/F. Hua Rong Tower
1289 Pudong Road South
Shanghai
200122 China
T +86 21 5882 2880
T +86 21 5882 2800

Shenzhen, China
2/F. Block 10,
Furong Industrial Estate
Xinqiao, Shajing
Baoan District
Shenzhen 518125 China
T +86 755 2990 0886
F +86 755 2990 0890

Tokyo, Japan
Keihin Higashi-Ohi Bldg.
10/F. 2-13-8 Higashi-Ohi
Shinagawa-ku
Tokyo 140-0011 Japan
T +81 3 5762 1031
F +81 3 5762 1032

Seoul, Korea
6th Fl. Fine Bldg. 701-6
Banpo-Dong, Seocho-Ku
Seoul, Korea 137-808
T +82 2 518 8347/8341
F +82 2 518 8342

Singapore
1 Maritime Square #09-02,
Harbour Front Centre
Singapore 048623
T +65 6224 7570
F +65 6224 4538

Europe

Austria
Slovenia, Slovakia, Hungary,
Czech Republic
Linzer Bundesstrasse 101
A-5023 **Salzburg**
T +43 662 88 4910
F +43 662 88 4910 11

France
10 Bld. Louise Michel
F-92230 **Gennevilliers**
T +33 1 46 88 07 70
F +33 1 46 88 07 99

Germany
Sweden, Denmark,
Norway, Finland, Poland,
Estonia, Lithuania, Latvia,
Russia
Weissenpferd 9
D-58553 **Halver**
T +49 2353 911 0
F +49 2353 911 230

Italy
Via Cadamosto 3
I-20094 **Corsico**, Milano
T +39 02 4869 21
F +39 02 4860 0692

Switzerland
Spain, Turkey, Portugal
Bahnhofstrasse 18
CH-3280 **Murten**
T +41 26 672 71 11
F +41 26 670 19 83

The Netherlands/Belgium
Hanzeweg 12c
NL-2803 **MC Gouda**
T +31 1825 43 154
F +31 1825 43 151

United Kingdom/Ireland
Dukesway
Team Valley Trading Estate
Gateshead
Tyne & Wear NE11 0UB
United Kingdom
T +44 191 401 61 00
F +44 191 401 63 05

America

Connecticut
10 Progress Drive
Shelton, CT 06484
T +1 203 447 5362
F +1 203 447 5383

Ohio
801 Scholz Drive
Vandalia, OH 45377
T +1 937 454 2345
F +1 937 898 8624

Ontario, Canada
70 Ironside Crescent Unit 7
Scarborough, **Ontario**
M1X 1G4 Canada
T +1 416 299 0852
F +1 416 299 6756

Sao Paulo, Brazil
Av. Papa Joao Paulo I - 1256
CEP 07170-350
Guarulhos **Sao Paulo**, Brazil
T (55) 11-643 156 00
F (55) 11-643 247 11



Maximum safety with minimum installation depth



Clear space advantage...

th contact

... with the E-Stop.
The most compact
emergency stop switch
in the world



ERMEC, S.L. BARCELONA
C/ Francesc Teixidó, 22
E-08918 Badalona
(Spain)

Tel.: (+34) 902 450 160
Fax: (+34) 902 433 088
info@ermec.com
www.ermec.com

ERMEC, S.L. MADRID
C/ Sagasta, 8, 1ª planta
E-28004 Madrid
(Spain)

PORTUGAL
portugal@ermec.com
BILBAO
bilbao@ermec.com