





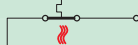
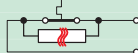




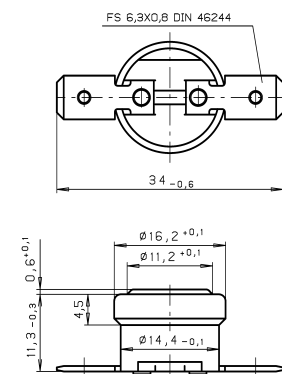
# Technical data thermo switch

Name	KO/KS	CO/CS	KB/CB	SO/CSO
				
Circuit diagram	 	KO/CO = break contact KS/CS = make contact	 	KB/CB = mechanical limiter SO/CSO = electrical limiter
Contact type	break/make contact with automatic return in its original position		break contact with mechanical latching	break contact with electrical latching
Nominal voltage	up to 250 V / 50 Hz			
electrical durability	100.000 cycles 10 (1,6) A 10.000 cycles 16 (6) A		3.000 cycles 10 (1,6) A 1.000 cycles 16 (6) A	
max. switching current	16 (6) A			10 (1,6) A
switching temperature range	40°C - 180°C (195°C)			
switching temp. tolerance	± 5 K, C, ± 10 K, others on demand			
switching temp. difference	A = ≤ 15 K, C = ≤ 40 K		customer's demand	
Degree of protection	IP00 sequential circuit protected against dust and dirt			
max. ambient temperature (permanent)	200°C			
electrical strength closing cap against mass	2000 V <sub>eff.</sub> 50 Hz			
electrical strength via open contacts	500 V <sub>eff.</sub> 50 Hz			
Approvals	VDE, conform to RoHS, further approvals upon request.			

## Order example

Controller /Detector — **KO 1 R 0 080 05 A** — Hysteresis: ≤ 15 K  
 Connection type: flat plug 6,3, lateral straight  
 range of switching temperature: 80°C  
 break contact (normally closed)  
 attachment type: loose flange on both sides  
 Tolerance: ± 5 K

## Dimensioned drawing (example)



**ERMEC, S.L. BARCELONA**  
 C/ Francesc Teixidó, 22  
 E-08918 Badalona  
 (Spain)

Tel.: (+34) 902 450 160  
 Fax: (+34) 902 433 088  
[info@ermec.com](mailto:info@ermec.com)  
[www.ermec.com](http://www.ermec.com)

**ERMEC, S.L. MADRID**  
 C/ Sagasta, 8, 1ª planta  
 E-28004 Madrid  
 (Spain)

**PORTUGAL**  
[portugal@ermec.com](mailto:portugal@ermec.com)



Distribución de componentes  
 eléctricos y electrónicos