



The new caps for the Multimec switches 1PS / 1QS / 1RS is optimized with a "snap on" system to ensure the cap to stay on the switch actuator even under heavy vibrations or similar scenarios.

- The 1PS cap is a solid cap which can be supplied in different colours
- The 1QS cap is a solid cap like 1PS, but with a rectangular lens for intensive or smooth illumination
- The 1RS cap is a solid cap like 1PS, but with a round lens for intensive or smooth illumination



Distributor:



ERMEC, S.L. BARCELONA  
C/ Francesc Teixidó, 22  
E-08918 Badalona  
(Spain)

Tel.: (+34) 902 450 160  
Fax: (+34) 902 433 088  
[info@ermec.com](mailto:info@ermec.com)  
[www.ermec.com](http://www.ermec.com)

ERMEC, S.L. MADRID  
C/ Sagasta, 8, 1ª planta  
E-28004 Madrid  
(Spain)

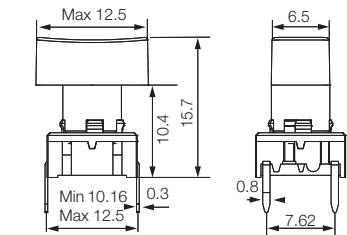
PORTUGAL  
[portugal@ermec.com](mailto:portugal@ermec.com)  
BILBAO  
[bilbao@ermec.com](mailto:bilbao@ermec.com)

### Technical Data

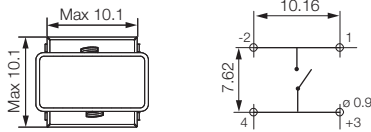
- through-hole or SMD
- 50mA/24VDC
- single pole/momentary
- 10.000.000 operations life time
- IP67 sealing
- temperature range:  
LED: -40/+85°C  
solid cap +65°C  
transparent +85°C
- actuation force: 2.0, 3.5, 6.5 N



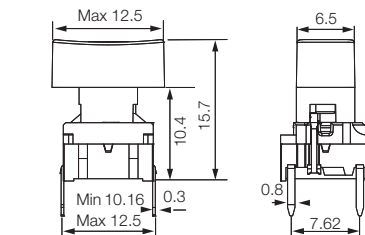
### Dimensions (through-hole)



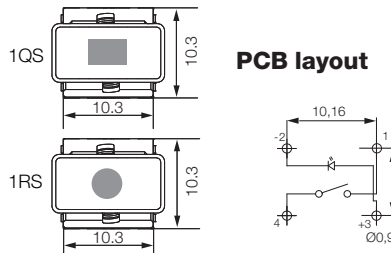
### PCB layout



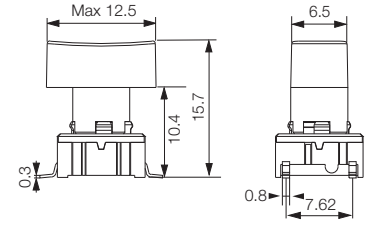
### Dimensions (w/LED)



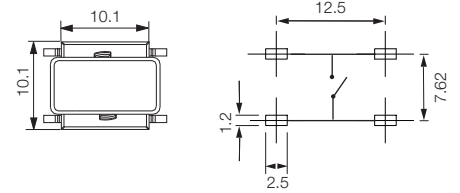
### PCB layout






### Dimensions (SMD)




### PCB layout



### HOW TO ORDER

<b>5 G</b>	<input type="checkbox"/>	<input type="checkbox"/>	<input type="checkbox"/>	<input type="checkbox"/>	<input type="checkbox"/>	<input type="checkbox"/>
<b>Switch</b>	<b>Mounting</b>	<b>Actuation force</b>	<b>LED</b>	<b>Cap</b>	<b>Colour code</b>	<b>Lens</b>
	<b>TH9</b> through-hole	<b>20</b>	<b>01</b> blue	<b>1QS</b> with lens	<b>00</b> blue	<b>1</b> transparent
	<b>SH9</b> surface mount	<b>35</b>	<b>22</b> green		<b>03</b> grey	<b>6</b> frosted white
		<b>65</b>	<b>42</b> yellow	<b>1RS</b> with lens	<b>08</b> red	
			<b>61</b> white		<b>09</b> black	
			<b>82</b> red	<b>1PS</b>		
			<b>2242</b> green/yellow		<b>11</b> transparent	
			<b>8222</b> red/green		<b>16</b> frosted white	
			<b>8242</b> red/yellow			

### Switch to be used: 5E or 5G

<b>5 E</b>	<input type="checkbox"/>	<input type="checkbox"/>	<input type="checkbox"/>	<input type="checkbox"/>
<b>5 G</b>	<b>Mounting</b>	<b>Actuation force</b>	<b>Cap</b>	<b>Colour code</b>
	<b>TH9</b> through-hole	<b>20</b>	<b>1PS</b> solid colour	<b>00</b> blue
	<b>SH9</b> surface mount	<b>35</b>		<b>02</b> green
		<b>65</b>		<b>03</b> grey
				<b>04</b> yellow
				<b>06</b> white
				<b>08</b> red
				<b>09</b> black

Dimensions (mm) Unless otherwise specified, all tolerances ±0,2



Ordering example: 5ETH935+1PS08

See colour codes on our website: [www.mec.dk](http://www.mec.dk)

**ERMEC, S.L. BARCELONA**  
C/ Francesc Teixidó, 22  
E-08918 Badalona  
(Spain)

Tel.: (+34) 902 450 160  
Fax: (+34) 902 433 088  
[info@ermec.com](mailto:info@ermec.com)  
[www.ermec.com](http://www.ermec.com)

**ERMEC, S.L. MADRID**  
C/ Sagasta, 8, 1ª planta  
E-28004 Madrid  
(Spain)

**PORTUGAL**  
[portugal@ermec.com](mailto:portugal@ermec.com)  
**BILBAO**  
[bilbao@ermec.com](mailto:bilbao@ermec.com)