

# MOCON AB PLUS

Modular system for tablets,  
capsules and other small parts



High speed with  
extreme accuracy

Reduce cost &  
increase reliability of  
weighing operations

# Automatic Balance System

This instrument is ETL listed,  
Conforms to UL Std. 3101-1c, is Certified  
to CAN/CSA C22.2 No. 1010-1,  
and Complies with CE Product Safety,  
Electromagnetic Emission & Susceptibility

**ERMEC**  
Equipos de control de calidad

Tel.: (+34) 902 450 160  
Fax: (+34) 902 433 088  
[ermec@ermec.net](mailto:ermec@ermec.net)  
[www.ermec.net](http://www.ermec.net)

**mocon**<sup>®</sup>

# For Laboratory Applications . . .

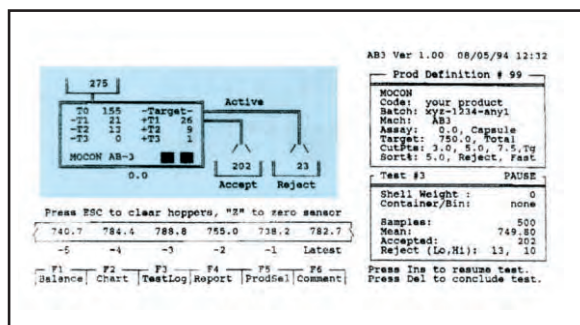
- **QC & QA**
- **Production Control**
- **R & D**
- **Clinical**



▲ Laboratory checks with statistics

## Completely automatic operation enables the balance to run independently of the operator.

MOCON is pleased to announce the AB PLUS, a new improved automatic balance. This system is ideal for unattended weighing and sorting of tablets or capsules. It is even possible to run the AB PLUS overnight. The AB PLUS gives outstanding throughput speed with precise repeatability making compliance with stringent government and in-house weight variance controls easier to achieve. The AB PLUS comes with its own computer and the statistics are suitable for record keeping or GMP purposes.



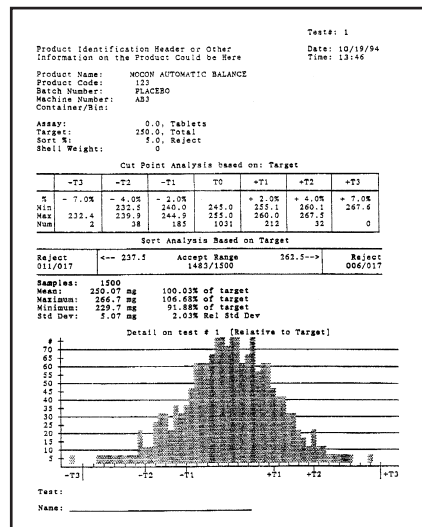
The main screen shows current status at a glance. The last six individual weights and product parameters are shown. It also shows HI and LOW rejects and running mean.

## Test larger quantities in less time.

Make hand weighing and data collection a thing of the past; weigh and sort tablets or capsules at high speeds with the AB PLUS. The AB PLUS's gentle airsweep even allows for work with dusty products.

### Statistical Reports Include:

- Histogram
- All individual weights
- Mean
- Standard Deviation
- Relative Standard Deviation
- Sort Totals



Printout of product report showing set-up parameters, statistical analysis, and histogram. Second page of report tallies all weights seen in sample.

# For Production Applications . . .

- **Process Control**
- **Rework**
- **Reclaim**

## Benefits to production and R & D

- Stores individual weights and statistics on hard drive.
- Safe and efficient operation.
- Performs fast, easy and unattended operation even overnight.
- Excellent accuracy and repeatability.
- Ideal for clinical batch and initial press start-up sorting.
- Includes desktop computer or optional notebook computer.
- Available with sorter and extra-large hopper extension for overnight applications.

## Multi-Sampler Option

Multi-sampler option permits up to ten booths to be monitored simultaneously throughout the batch run.



▲ *Continuous overnight sorter in operation.*

## Sorter Option

Automatically separates out-of-weight tolerance product (rejects) from acceptable product and includes continuous sorting mode of operation. Sorter chute extension permits continuous operation over extended intervals. Also can be used to separate "bad" product out before sending samples to assay. The sorter option is superior to competitive units by virtue of its "jam free" operation, ease of running into drums without table modification, and lower cost. Continuous sorting of your product depends on several factors, such as size, shape and weight.



▲ *Top view of balance shows automatic feed, individual weight readings, product removal and sorting.*

# Sort Complete Batches of Product...

**MOCON's Automatic Balances are modular.  
Start with a master, and add up to nine more satellites.**



## **AB PLUS**

*One master module with satellites to increase throughput.*

***You decide the throughput you need versus your budget.*** The computer, included with the master module keeps track of the product being processed by each module. Total batch statistics are computed, including total tablets or capsules processed, total good, total bad, standard deviation, histogram, etc.

### **Specifications**

Readability: 1 and 0.1 mg, selectable  
Weighing speed: 20-45 per minute (per module).  
Hi & Low speeds selectable\*  
Power: 120VAC, 60Hz, 1 amp  
All foreign voltages available  
Requires in-house air.

\*Speed depends on tablet shapes and may be slower for some products.

### Nominal System Throughput\*

1 Master Module	45/min
1 Master with 4 satellites	225/min
1 Master with 6 satellites	315/min
1 Master with 9 satellites	450/min



Equipos de control de calidad

Tel.: (+34) 902 450 160

Fax: (+34) 902 433 088

[ermec@ermec.net](mailto:ermec@ermec.net)

[www.ermec.net](http://www.ermec.net)

**mocon**<sup>®</sup> Phone 763-493-6370  
Fax 763-493-6358  
7500 Boone Ave N, Minneapolis, MN 55428

Visit our website at  
[www.mocon.com](http://www.mocon.com)

or email us at [mocon@mocon.com](mailto:mocon@mocon.com)

MOCON is a registered trademark of MOCON, Inc.  
Copyright © 2002 MOCON, Inc.

MOCON reserves the right to change specifications without notice as part of our continuous program of product improvement.

ABPLUS8021M