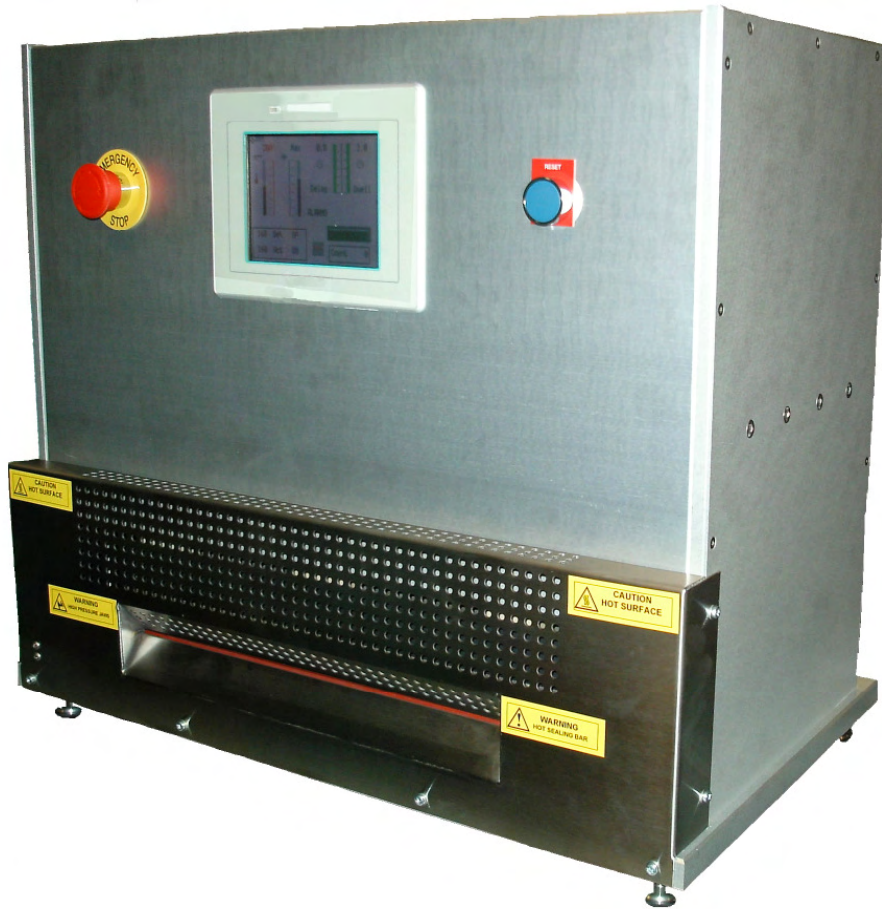


HS-X1 HEAT SEALER



Heat Seal technology has improved at a very fast pace within the production environment. Simple impulse type sealing is now not sufficient or accurate enough to seal most high specification polymers, plastic films, laminates, foils or even breathable materials, therefore RDM have introduced the HS-1XS with its advanced heat sealing controls and features which will suit the production type application.

The HS-1XS features a high level of individual control for temperature, pressure and dwell time. The electronics uses the latest technology in digital processing and links up with a single touch sensitive processing panel, where the control parameters can be set up and monitored for the application in hand.

The HS-1XS also includes many features, which you might find in a production sealing machine of this type such as a resettable sealed pack counter, high/low alarms on temperature and pressure settings to warn of possible deviations from sealing settings, a cycle which maintains the heat of the silicone rubber jaw when the machine is left idle for a period of time.

The electronic processing capability allows the machine to be accurately calibrated on the control parameters therefore providing complete traceability on sealing production.

Meets ASTM F-2029-00 (only when top/lower jaw heated)



The HS-X1 also features a unique guidance system on the moving sealing jaw, 4 hardened steel rods and linear bearings guide the top jaw in its movement up and down vertically, ensuring the sealing bar will always be flat and eliminating the possibility of twisting and uneven decent to the lower jaw, resulting in consistently high quality seals.

SPECIFICATION:

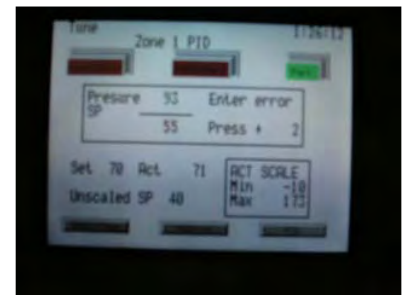
- Control Panel:** e-TOP11, 5.6" 320x240 colour STN display, 16x40 characters text or graphic Analogue resistive touchscreen, IP65 front panel, Alarms, Real time clock Recipe handling, 24v DC
- Temperature:** 0 - 250°C (0 - 482°F) 1°C resolution +/- 0.5% +/- 1 digit accuracy. Operating temperature accuracy +/- 2°C. Thermocouple Type 'J' sensing. Temperature alarms operating with a band limit settable from 1°C to 20°C over and under set level. Alarm is an audible sound and a seal control inhibit.
- Pressure:** 0 - 100psi (0 - 6.8 bar, 0 - 689 Kpa) via electronic pneumatic E/P regulator. +/- 1.0% of span +/- 1 digit accuracy. Operating accuracy +/- 5% (taking into pressure/friction losses in system). Pressure alarms on High and Low deviation of up to 20psi off set value. Alarm is an audible sound and seal control inhibit. Supply via factory compressed air line or nitrogen or compressed air bottles. Pressure medium must be clean and dry.
- Dwell Time:** 0.1 - 99.9 sec. 0.1 sec resolution real time base via quartz crystal from the processor, +/- 0.1% of range. Operating accuracy +/- 5% (taking into account friction in piston movement).
- Delay Time:** 0.1 - 99.9 sec. 0.1 sec resolution real time base via quartz crystal from the processor, +/- 0.1% of range. Assists with the correct alignment of the pouch/bag/sample.
- Footswitch:** Connection port for footswitch operation
- Sealing Jaw:** Single jaw option: Top heated with silicone rubber (60 shore hardness) 10mm - 25mm wide x up to 450mm long. Jaws made from aluminium with machine ground flat face. Dual jaw option: Top and Lower heated 10mm -25mm wide x up to 450mm long. Jaws made from aluminium with machine ground flat face. Top sealing jaw is guided with ground steel rods and bearings to give good Seal alignment.
- Counting:** A counting feature is provided to count the number of sealed pouches completed. Counter is resetable through password protection
- Preheat cycle:** When the machine is left idle for any period of time the silicone rubber jaw will often cool down, therefore requiring a preheat of silicone rubber. With our preheat cycle a programmed seal cycle can be performed with variable time and interval.



Boot up to default screen with machine status



Settings screen for all control parameters



Temperature and pressure calibration screen



Equipos de control de calidad

Tel.: (+34) 902 450 160

Fax: (+34) 902 433 088

ermec@ermec.net

www.ermec.net

RDM Test Equipment Ltd. Unit 39 Golds Business Park,
Jenkins Drive, Elsenham, Herts CM22 6JX UK
Tel: +441279817171 Fax: +441279815743
e-mail: rdmtest@aol.com web: www.rdmtest.com