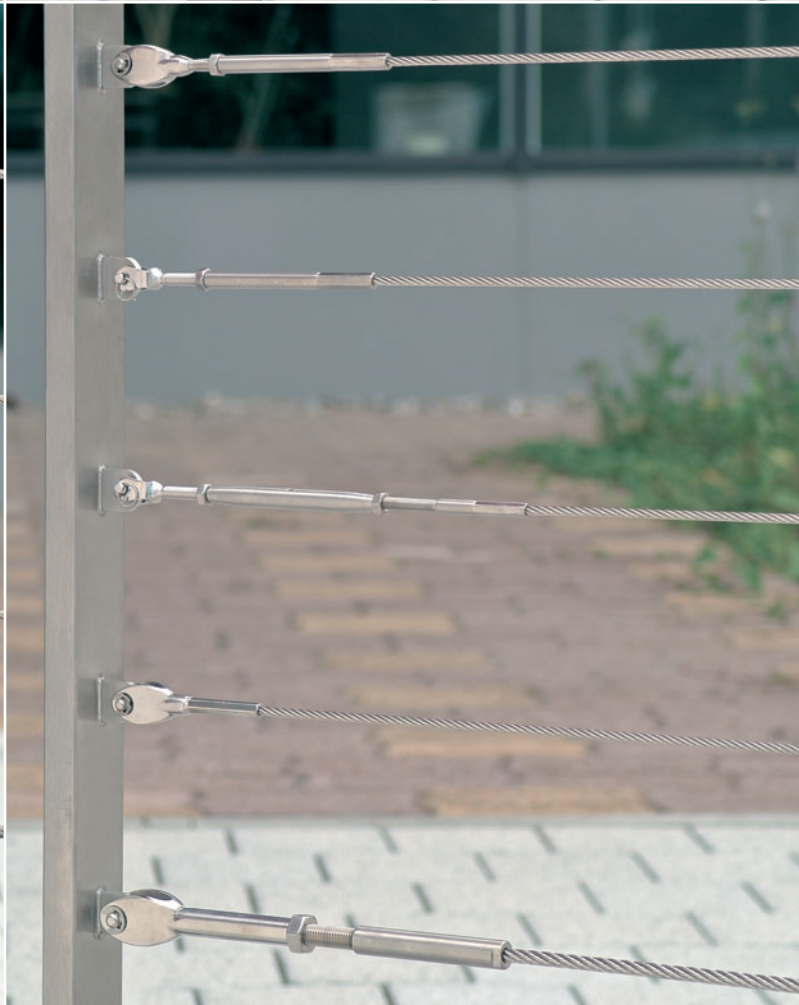




I-SYS Edition



I-SYS Edition

I-SYS, the stainless steel architectural range by Carl Stahl, comprises around 1,200 individual parts as well as a large number of cable assemblies and applications with cables ranging from 1 to 26 millimetres in diameter. I-SYS is all about functionality, creativity and award-winning design. The general certification awarded by the German Public Construction Authority for important parts guarantees assured safety and underlines the competence of the entire program.

I-SYS Edition provides selected individual parts and cable assemblies.

For all the details on the entire I-SYS program as well as further information, go to www.carlstahl.com.

Certifications:

DIN ISO 9001:2000 Quality Management System

DIN ISO 14001:2004 Environmental Management System

Z-14.7-435 High Strength Cable Bars





Façade Greenery

The I-SYS program has a number of selected systems and ready-made assemblies for frequent areas of use. They make for easy planning and allow fast implementation. For example, a façade greenery system with a coordinated range for simple assembly. The combination of different wall mounts and rope fittings enables creative solutions for small, medium-sized and extensive areas of green.

Carl Stahl provides offers with free planning within 48 hours: architektur@carlstahl.com.

Canopy

Canopies from the I-SYS program suit every building type. They can either be planned individually or come preassembled. The large number of forks and eyes enables suspension at any angle.

The Carl Stahl Architecture Team would be happy to answer questions on planning: architektur@carlstahl.com.

Balustrade

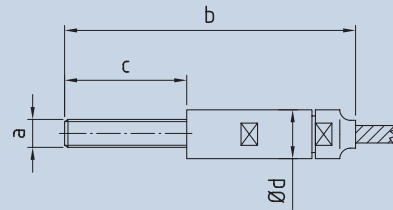
The I-SYS program for balustrades provides plenty of scope for individual shapes for stairways, platforms, walkways and bridges. Value-for-money, functional and transparent solutions are created from stainless steel cables and end connections; some have been awarded international design prizes. Whether preassembled or mounted individually on site, stainless steel cables provide fast balustrade infill with the perfect design balance.

External Threads



External thread swageless connection

Part number RH thread	Part number LH thread	\varnothing rope	a	\varnothing d	b	c	kN
826-0400-030	827-0400-030	4	M6	13	85	30	8
826-0400-060	827-0400-060	4	M6	13	115	60	8
826-0500-030	827-0500-030	5	M8	15	87	30	12,6
826-0500-060	827-0500-060	5	M8	15	117	60	12,6
826-0600-030	827-0600-030	6	M8	15	87	30	18,1
826-0600-060	827-0600-060	6	M8	15	117	60	18,1
826-0800-080	827-0800-080	8	M10	20	167	80	32,2



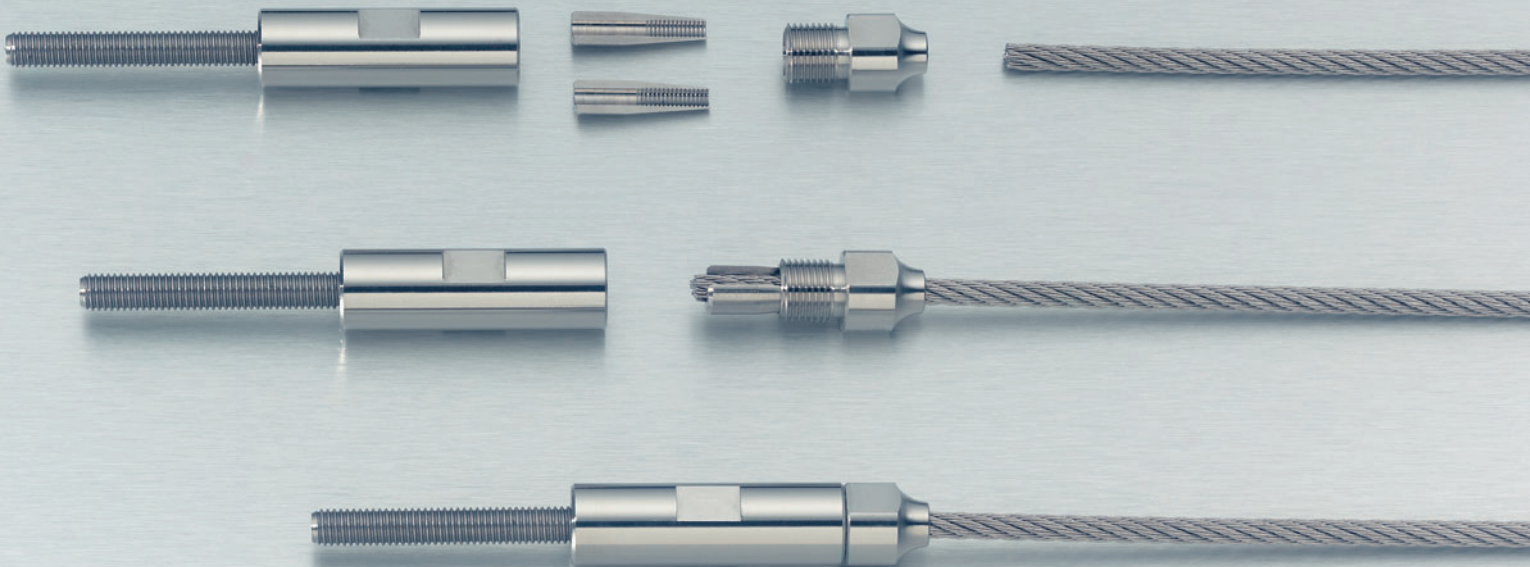
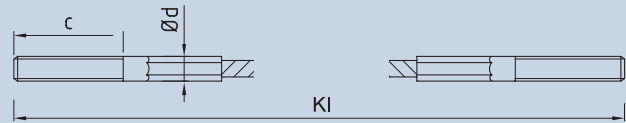
Material 1.4401/AISI 316L | Not suitable for strand 1 x 19

Easy self-assembly on site without special tools.



Both sides external thread swaged

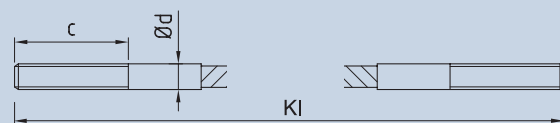
Part number both sides RH thread	Part number one LH thread one RH thread	\varnothing rope	Sk	Thread size x length c	\varnothing d
IK 100-0400	IK 101-0400	4	7 x 7	M6 x 30	7
IK 100-0401	IK 101-0401	4	7 x 7	M6 x 60	7
IK 100-0500	IK 101-0500	5	7 x 7	M8 x 30	8
IK 100-0501	IK 101-0501	5	7 x 7	M8 x 60	8
IK 100-0600	IK 101-0600	6	7 x 7	M10 x 30	10
IK 100-0601	IK 101-0601	6	7 x 7	M10 x 60	10
IK 100-0800	IK 101-0800	8	7 x 7	M12 x 80	13





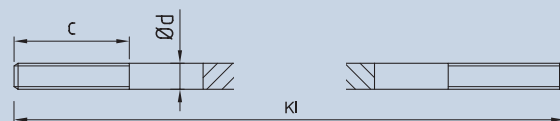
Both sides external thread F30 hammered

Part number both sides RH thread	Part number one LH thread one RH thread	ø rope	Sk	Thread size x length c	ø d
IK 120-0400	IK 121-0400				
IK 120-0401	IK 121-0401	4	7 x 7	M5 x 50	4,9
IK 120-0500	IK 121-0500	5	7 x 7	M6 x 30	5,9
IK 120-0501	IK 121-0501	5	7 x 7	M6 x 50	5,9
IK 120-0600	IK 121-0600	6	7 x 7	M8 x 30	7,9
IK 120-0601	IK 121-0601	6	7 x 7	M8 x 60	7,9
IK 120-0800	IK 121-0800	8	7 x 7	M10 x 30	9,9
IK 120-0801	IK 121-0801	8	7 x 7	M10 x 60	9,9



Both sides external thread F50 hammered

Part number both sides RH thread	Part number one LH thread one RH thread	ø rope	Sk	Thread size x length c	ø d
IK 125-0400	IK 126-0400				
IK 125-0401	IK 126-0401	4	7 x 7	M4 x 60	4,4
IK 125-0500	IK 126-0500	5	7 x 7	M5 x 30	5,5
IK 125-0501	IK 126-0501	5	7 x 7	M5 x 60	5,5
IK 125-0600	IK 126-0600	6	7 x 7	M6 x 30	6,6
IK 125-0601	IK 126-0601	6	7 x 7	M6 x 60	6,6
IK 125-0800	IK 126-0800	8	7 x 7	M8 x 30	8,8
IK 125-0801	IK 126-0801	8	7 x 7	M8 x 60	8,8



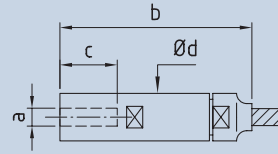
Thread diameter = cable diameter




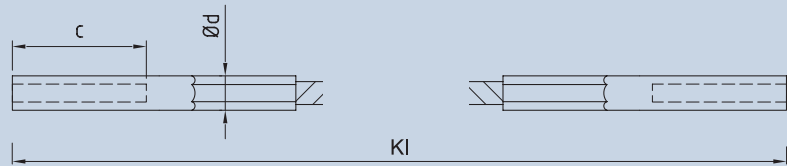


Internal thread swageless connection

Part number RH thread	Part number LH thread	ø rope a	b	c	ø d	kN	
831-0300	832-0300	3	M6	55	18	13	4,5
831-0400	832-0400	4	M6	55	18	13	8
831-0500	832-0500	5	M8	57	20	15	12,6
831-0600	832-0600	6	M8	57	20	15	18,1
831-0800	832-0800	8	M10	87	40	20	32,2



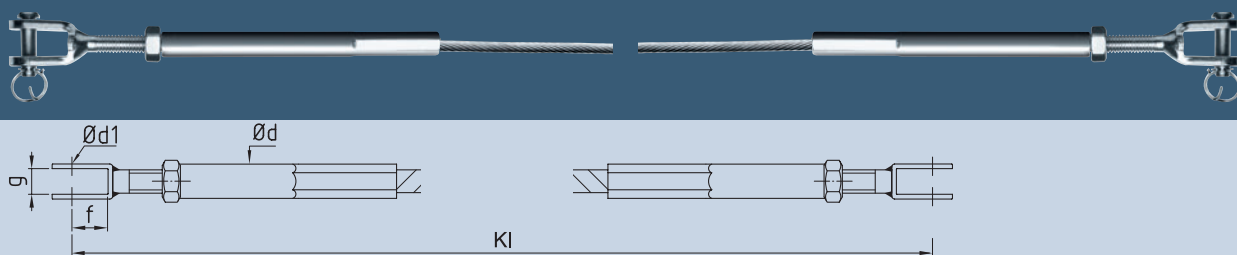
 Material 1.4401/AISI 316L | Not suitable for strand 1 x 19
Easy self-assembly on site without special tools.



Both sides internal thread swaged

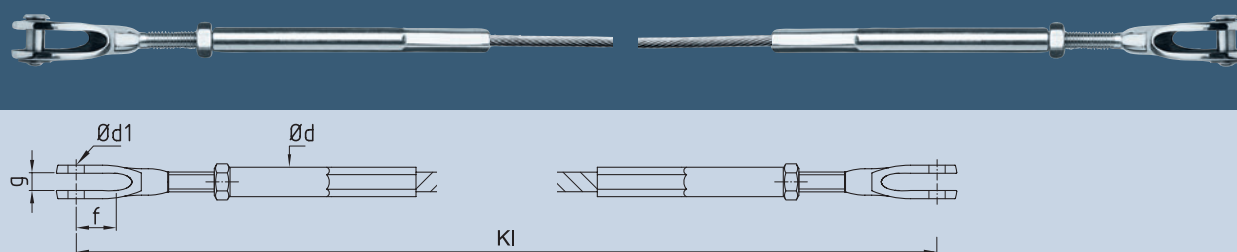
Part number both sides RH thread	Part number one LH thread one RH thread	ø rope Sk	Thread size x length c	ø d
IK 200-0400	IK 201-0400	4	7 x 7 M6 x 20	8
IK 200-0401	IK 201-0401	4	7 x 7 M6 x 35	8
IK 200-0500	IK 201-0500	5	7 x 7 M6 x 20	8
IK 200-0501	IK 201-0501	5	7 x 7 M6 x 35	8
IK 200-0600	IK 201-0600	6	7 x 7 M8 x 25	10
IK 200-0601	IK 201-0601	6	7 x 7 M8 x 50	10





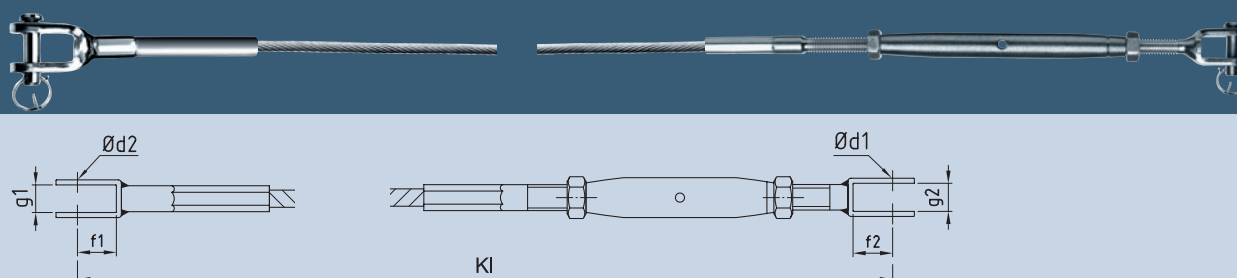
Both sides fork with internal thread swaged

Part number	ø rope	Sk	Thread	Adjustment	ø d	f	g	ø d1
IK 300-0400	4	7 x 7	M6	+8 -20	8	12	7,5	5
IK 300-0401	4	7 x 7	M6	+22 -34	8	12	7,5	5
IK 300-0500	5	7 x 7	M6	+8 -20	8	12	7,5	5
IK 300-0501	5	7 x 7	M6	+22 -34	8	12	7,5	5
IK 300-0600	6	7 x 7	M8	+8 -24	10	13	10	6
IK 300-0601	6	7 x 7	M8	+34 -50	10	13	10	6
IK 300-0800	8	7 x 7	M10	+34 -54	13	15	11	8
IK 300-1000	10	7 x 19	M14	+52 -80	20	25	14	12
IK 300-1200	12	7 x 19	M16	+52 -84	25	31	22	14
IK 300-1600	16	7 x 19	M20	+60 -100	32	42	24	19



Both sides CS-Fork with internal thread swaged

Part number	ø rope	Sk	Thread	Adjustment	ø d	f	g	ø d1
IK 305-0400	4	7 x 7	M6	+14 -22	8	14	6,5	6
IK 305-0500	5	7 x 7	M6	+14 -22	8	14	6,5	6
IK 305-0600	6	7 x 7	M8	+22 -42	10	19	8,5	8
IK 305-0800	8	7 x 7	M10	+22 -42	13	19	8,5	8



One side turnbuckle with fork, other side with fork swaged

Part number	ø rope	Sk	Thread	Adjustment	f1	g1	ø d1	f2	g2	ø d2
IK 310-0400	4	7 x 7	M6	+28 -50	13	10	5	12	7,5	5
IK 310-0401	4	7 x 7	M8	+34 -50	13	10	6	13	10	6
IK 310-0500	5	7 x 7	M8	+34 -50	15	11	6	13	10	6
IK 310-0600	6	7 x 7	M10	+30 -50	20	12	8	15	11	9,5
IK 310-0800	8	7 x 7	M12	+46 -70	25	14	12	25	14	12

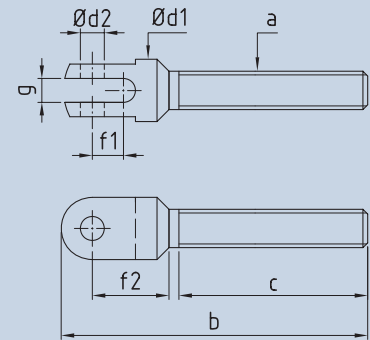
Eyes



Eye counterpiece

Part number	a	b	c	ø d1	ø d2	f1	f2	g
887-0800	M8	72	48	13	5	6,5	16	5

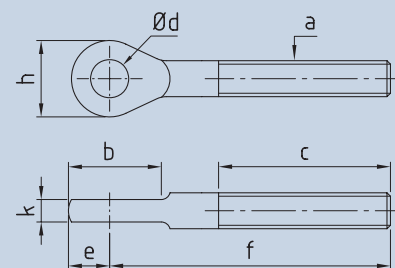
Material 1.4401/AISI 316



Eye with external thread

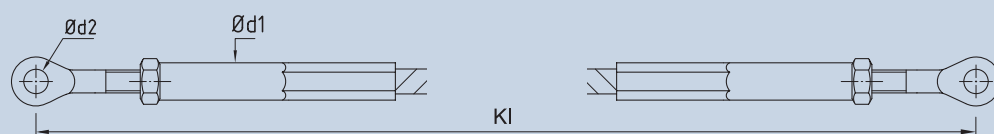
Part number RH thread	Part number LH thread	a	b	c	ø d	e	f	h	k
885-0600	886-0600	M6	16	47	6,5	7	61	14	4
885-0600-01	886-0600-01	M6	16	30	6,5	7	44	14	4
885-0800	886-0800	M8	21	57	8,5	8,5	78	17	5
885-0800-01	886-0800-01	M8	21	35	8,5	9,5	55,5	17	5
885-1000	886-1000	M10	29	63	10,5	12	90	22	6
885-1200	886-1200	M12	31	80	13	14	110	25	8

Material 1.4401/AISI 316



Award-winning design





Both sides eye with internal thread swaged

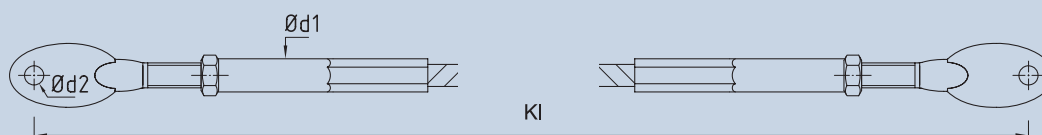
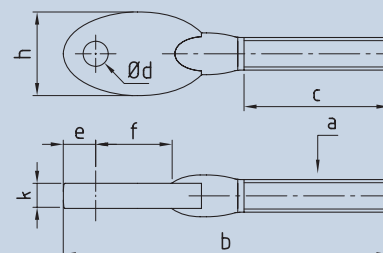
Part number	\varnothing rope	Sk	Thread	Adjustment	$\varnothing d1$	$\varnothing d2$
IK 400-0400	4	7 x 7	M6	+8 -20	8	6,5
IK 400-0401	4	7 x 7	M6	+22 -34	8	6,5
IK 400-0500	5	7 x 7	M6	+8 -20	8	6,5
IK 400-0501	5	7 x 7	M6	+22 -34	8	6,5
IK 400-0600	6	7 x 7	M8	+8 -24	10	8,5
IK 400-0601	6	7 x 7	M8	+34 -50	10	8,5
IK 400-0800	8	7 x 7	M10	+34 -54	13	10,5



CS-Eye with external thread

Part number RH thread	Part number LH thread	a	b	c	$\varnothing d$	e	f	h	k
985-0600	986-0600	M6	78	32	6	8	19	20	6
985-0800	986-0800	M8	78	32	6	8	19	20	6
985-0801	986-0801	M8	106	47	8	10	23	24,5	8
985-1000	986-1000	M10	106	47	8	10	23	24,5	8

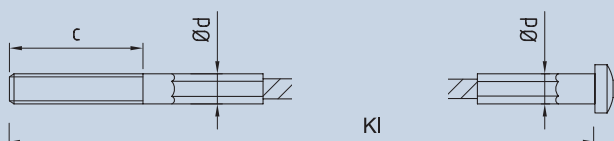
Material 1.4401/AISI 316 | CS-Eye is compatible with CS-Fork



Both sides CS-Eye with internal thread swaged

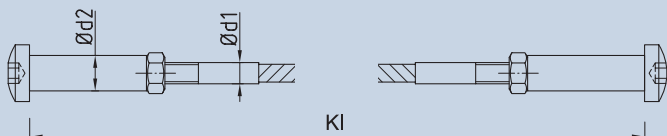
Part number	\varnothing rope	Sk	Thread	Adjustment	$\varnothing d1$	$\varnothing d2$
IK 405-0400	4	7 x 7	M6	+14 -22	8	6
IK 405-0500	5	7 x 7	M6	+14 -22	8	6
IK 405-0600	6	7 x 7	M8	+22 -42	10	8
IK 405-0800	8	7 x 7	M10	+22 -42	13	8

End Stops



One side external thread swaged, other side radiused head end stop swaged

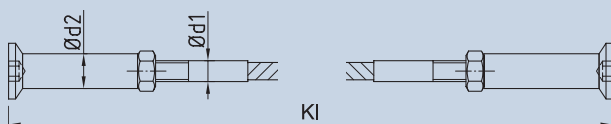
Part number	Ø rope	Sk	Thread size x length c	Ø d
IK 150-0200	2	7 x 7	M5 x 30	5
IK 150-0201	2	7 x 7	M5 x 60	5
IK 150-0300	3	7 x 7	M6 x 30	6
IK 150-0301	3	7 x 7	M6 x 60	6
IK 150-0400	4	7 x 7	M6 x 30	7
IK 150-0401	4	7 x 7	M6 x 60	7
IK 150-0500	5	7 x 7	M8 x 30	8
IK 150-0501	5	7 x 7	M8 x 60	8
IK 150-0600	6	7 x 7	M10 x 30	10
IK 150-0601	6	7 x 7	M10 x 60	10
IK 150-0800	8	7 x 7	M12 x 80	13



Both sides with external thread F30 and internal thread radiused end stop

Part number	Ø rope	Sk	Thread	Adjustment	Ø d1	Ø d2
IK 170-0400	4	7 x 7	M5	+6 -24	4,9	7
IK 170-0500	5	7 x 7	M6	+6 -22	5,9	8
IK 170-0600	6	7 x 7	M8	+8 -26	7,9	10

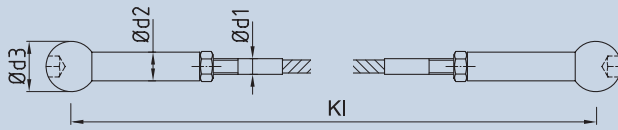
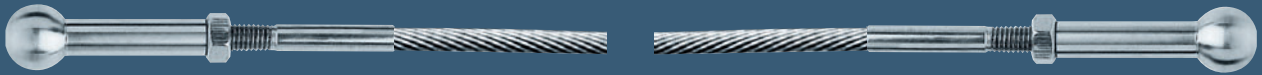
Possible to tighten with only slight protrusion at the profile



Both sides with external thread F30 and internal thread countersunk end stops

Part number	Ø rope	Sk	Thread	Adjustment	Ø d1	Ø d2
IK 180-0400	4	7 x 7	M5	+6 -24	4,9	7
IK 180-0500	5	7 x 7	M6	+6 -22	5,9	8
IK 180-0600	6	7 x 7	M8	+8 -26	7,9	10

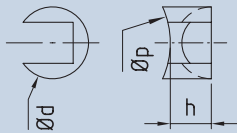
Possibility to tighten can be countersunk in the profile



Both sides with external thread F30 and internal thread ball head

Part number	\varnothing rope Sk	Thread	Adjustment $\varnothing d1$	$\varnothing d2$	$\varnothing d3$
IK 190-0300	3 7 x 7	M4	+4 -15	3,9	14
IK 190-0400	4 7 x 7	M5	+5 -20	4,9	14
IK 190-0500	5 7 x 7	M6	+5 -20	5,9	14

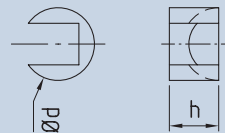
The angle can be set freely in combination with shaped connection for ball head.



Pivot base for ball head

Part number	$\varnothing d$	h	\varnothing Rohr p
868-034	14	9,5	33,7
868-043	14	9,5	42,4
868-060	14	9,5	60

Material 1.4401/AISI 316 | for round profile



Pivot base for ball head

Part number	$\varnothing d$	h
868-456	14	9,5

Material 1.4401/AISI 316 | for flat profile





Rope 7 x 7

Part number	ø	kN	MQ mm ²
820-0300	3	5,03	3,85
820-0400	4	8,94	6,85
820-0500	5	14	10,70
820-0600	6	20,10	15,42
820-0800	8	35,80	27,40

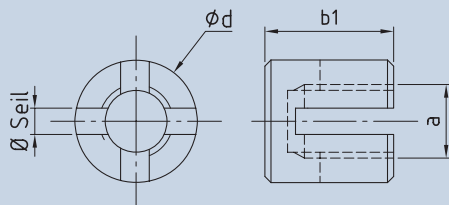
Material 1.4401/AISI 316



Rope 7 x 19


Part number	ø	kN	MQ mm ²
830-1000	10	52,1	41,45
830-1200	12	75,1	59,69
830-1400	14	102	81,25
830-1600	16	133	106,12

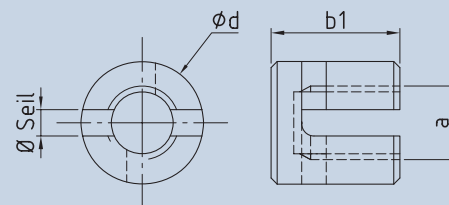
Material 1.4401/AISI 316



90° cross clamp


Part number	ø rope	a	b1	ø d
858-0600	4	M12	21	20
858-0600	6	M12	25	20

 Material 1.4401/AISI 316



Adjustable cross clamp


Part number	ø rope	a	b1	ø d
858-0400-01	4	M12	19,5	20
858-0600-01	6	M12	23,5	20

 Material 1.4401/AISI 316

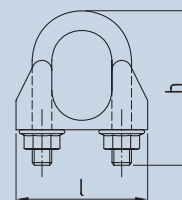
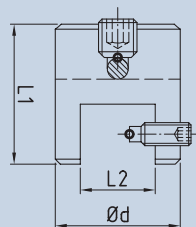


Shelf/Panel Connector

Part number	ø rope	l1	l2	ø d
858-0400-04	3/4	28	15	25
858-0600-04	5/6	32	15	25

 Material 1.4401/AISI 316

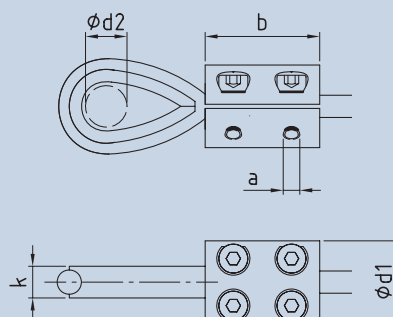
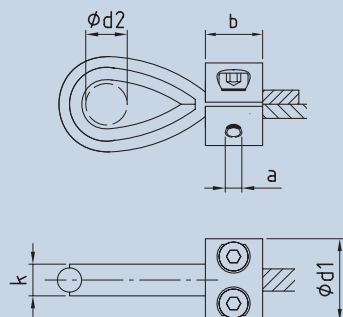
Suitable for hanging signs and shelves.



Wire rope clip

Part number	Grips		h	l
	ø rope	per Loop		
800-0400	4	3	24	19
800-0500	5	4	33	24
800-0600	6	4	33	28
800-0800	8	4	40	34

 Material 1.4401/AISI 316 | Not suitable for stranded wire



Light clamp ring with thimble

Part number	ϕ rope	a	b	$\phi d1$	$\phi d2$	k	kN
874-0300-01	3	M3	10	15	9,5	5,5	2,4
874-0400-01	4	M4	10	20	10,5	6,5	4



Material 1.4401/AISI 316 | Not suitable for stranded wire

Loop clamp ring with thimble

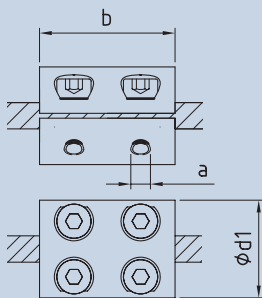
Part number	ϕ rope	a	b	$\phi d1$	$\phi d2$	k	kN
874-0300	3	M4	27	22	9,5	5,5	4,9
874-0400	4	M4	27	22	10,5	6,5	5,1
874-0500	5	M4	42	28	12,5	8	7,8
874-0600	6	M4	42	28	15,5	9	12
874-0800	8	M4	42	28	17,5	12	13



Material 1.4401/AISI 316 | Not suitable for stranded wire



Accessories

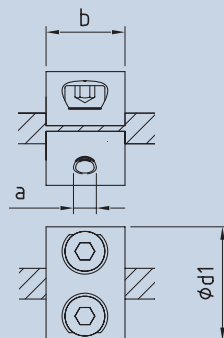


Clamp ring

Part number	ø rope	Fax	a	b	ø d1
873-0300	3	3	M4	27	22
873-0400	4	3,6	M4	27	22
873-0500	5	5,8	M5	42	28
873-0600	6	6,5	M5	42	28
873-0800	8	9,4	M5	42	28



Material 1.4401/AISI 316 | Not suitable for stranded wire



Light clamp ring

Part number	ø rope	Fax	a	b	ø d1
863-0300	3	1,3	M3	10	15
863-0400	4	1,5	M3	10	15
863-0500	5	2	M4	10	20
863-0600	6	2,2	M4	10	20
863-0800	8	2,2	M4	10	20



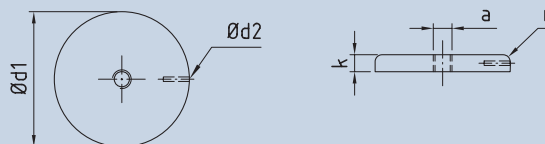
Material 1.4401/AISI 316 | Not suitable for stranded wire

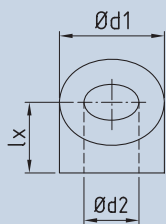


Cover disk with internal thread

Part number RH thread	Part number LH thread	a	ø d1	ø d2	r	k
836-0500-05	836-0500-06	M5	35	1,5	2,5	4
836-0600-05	836-0600-06	M6	35	1,5	2,5	4
836-0800-05	836-0800-06	M8	50	3,5	3	6
836-1000-05	836-1000-06	M10	50	3,5	3	6

Material 1.4401/AISI 316L



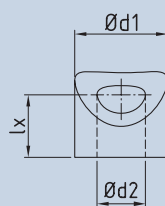
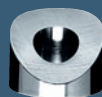


Angle stand off washer for external thread, flat profile

Part number	Thread	ø d1	ø d2
862-04-0	M4	10	4,3
862-05-0	M5	10	5,5
862-06-0	M6	13	7,3
862-08-0	M8	18	8,3
862-10-0	M10	22	10,5
862-12-0	M12	24	12,5
862-16-0	M16	32	17

Material 1.4301/AISI 304

Please specify the required angle when ordering.



Angle stand off washer for external thread, round profile

Part number	Thread	ø d1	ø d2
862-04-1	M4	10	4,3
862-05-1	M5	10	5,5
862-06-1	M6	13	7,3
862-08-1	M8	18	8,3
862-10-1	M10	22	10,5
862-12-1	M12	24	12,5
862-16-1	M16	32	17

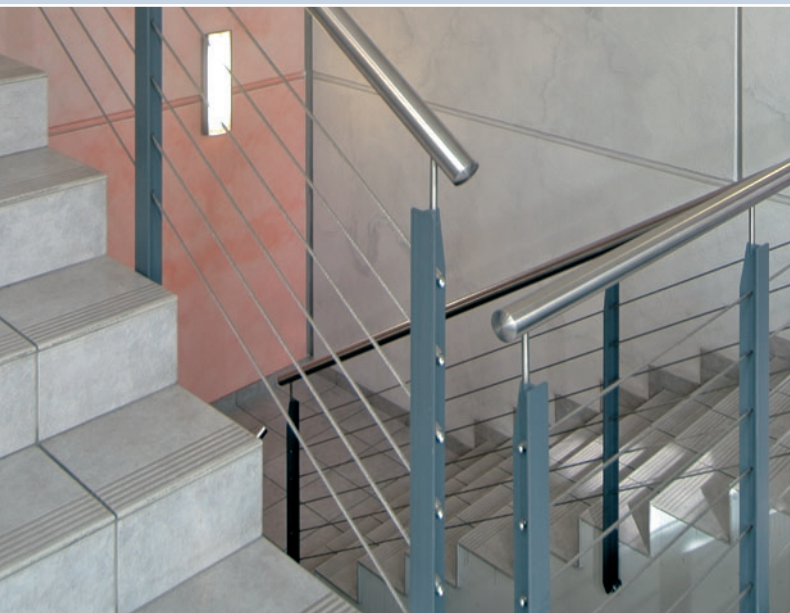
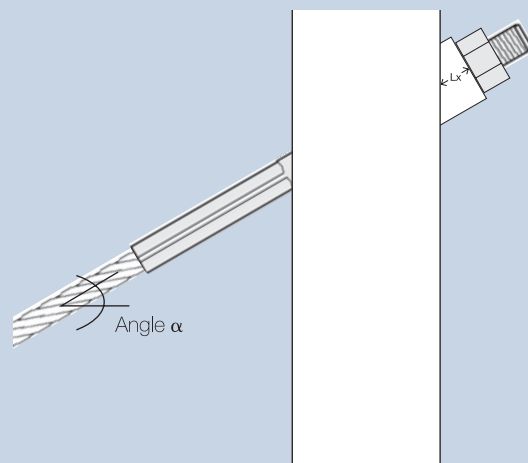
Material 1.4301/AISI 304

Please specify diameter of post and angle when ordering.

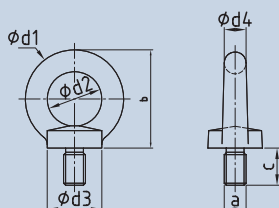
Length Lx for angled stand off washers

Angle α	ø d1 (8 mm)	ø d1 (10 mm)	ø d1 (13 mm)	ø d1 (18 mm)	ø d1 (22 mm)	ø d1 (24 mm)
0° - 34°	5,3	5,9	6,8	8,2	9,4	9,9
35° - 40°	5,8	6,5	7,8	9,3	10,7	11,4
40° - 60°	6,4	7,2	8,5	10,6	12,2	13,1

For round post profiles specify the angle as well as the outside diameter of the post.
Standard washers with profiled forms to suit 1", 1 1/4" and 1 1/2" posts available.



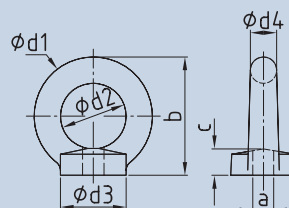
Accessories



Eye bolt

Part number	kN	a	b	c	$\phi d1$	$\phi d2$	$\phi d3$	$\phi d4$
837-0600	4,2	M6	36	13	36	20	20	8
837-0800	8,4	M8	36	13	36	20	20	8
837-1000	13,8	M10	45	17	45	25	25	10
837-1200	19,8	M12	53	21	54	30	30	12
837-1600	41,4	M16	62	27	63	35	35	14

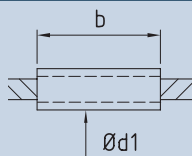
Material 1.4401/AISI 316 | DIN 580



Eye nut

Part number	kN	a	b	c	$\phi d1$	$\phi d2$	$\phi d3$	$\phi d4$
838-0600	4,2	M6	36	8	36	20	20	8
838-0800	8,4	M8	36	8	36	20	20	8
838-1000	13,8	M10	45	10	45	25	25	10
838-1200	19,8	M12	53	11	54	30	30	12
838-1600	41,4	M16	62	13	63	35	35	14

Material 1.4401/AISI 316 | DIN 582



Loose sleeve

Part number	ϕ rope	ϕd	b
864-0306	3	6	30
864-0307	3	7	30
864-0407	4	7	30
864-0407 M	4	7	40
864-0407 L	4	7	55
864-0408	4	8	30
864-0408 M	4	8	40
864-0408 L	4	8	55
864-0508	5	8	30
864-0508 M	5	8	40
864-0508 L	5	8	55
864-0610	6	10	30
864-0610 M	6	10	40
864-0610 L	6	10	55

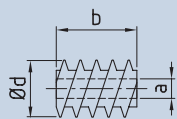
Material 1.4401/AISI 316L | The sleeve can slide along the length of the cable. Secure the sleeve to the post profile not the rope. Protects cables routed through intermediate posts.



Threaded rod

Part number	Part number	a	c
RH thread	LH thread		
882-0500-060	883-0500-060	M5	60
882-0500-100	883-0500-100	M5	100
882-0600-060	883-0600-060	M6	60
882-0600-100	883-0600-100	M6	100
882-0800-060	883-0800-060	M8	60
882-0800-120	883-0800-120	M8	120
882-0800-220	883-0800-220	M8	220
882-1000-060	883-1000-060	M10	60
882-1200-080	883-1200-080	M12	80
882-1600-080	883-1600-080	M16	80

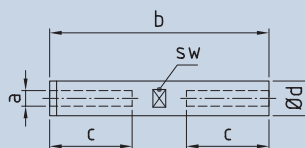
Material 1.4305



Rampa screw for wood

Part number	a	b	ø d	ø x
803-0400-04	M4	12	8	6,9
803-0500-04	M5	14	10	8,9
803-0600-04	M6	15	12	10,4
803-0601-04	M6	25	12	10,4
803-0800-04	M8	18	16	14,5
803-0801-04	M8	30	16	14,5
803-1000-04	M10	25	18,5	16,7
803-1001-04	M10	40	18,5	16,7

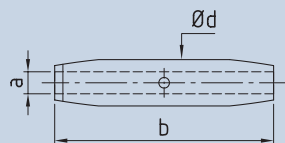
Blue galvanised steel | Type SK hexagon socket (~DIN 7965)
 ø x = Pilot hole in wood



Cylindrical turnbuckle barrel LH/RH

Part number	a	b	c	ø d	sw
875-0500-01	M5	60	25	8	7
875-0500-02	M5	100	45	8	7
875-0600-01	M6	70	30	10	9
875-0600-02	M6	120	55	10	9
875-0800-01	M8	70	30	12	11
875-0800-02	M8	120	55	12	11

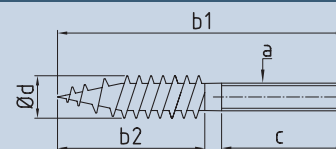
Material 1.4401/AISI 316



Turnbuckle barrel with internal thread LH/RH

Part number	a	b	ø d
875-0500	M5	80	8
875-0600	M6	92	10
875-0800	M8	112	13,5
875-1000	M10	120	17,2
875-1200	M12	150	21,3
875-1400	M14	170	21,3
875-1600	M16	190	26,9
875-2000	M20	220	33,7
875-2400	M24	328	50

Material 1.4401/AISI 316



Dual thread screw

Part number RH thread	Part number LH thread	a	b1	b2	c	ø d
878-0500	877-0500	M5	50	30	20	4,3
878-0600	877-0600	M6	70	40	30	5,2
878-0800	877-0800	M8	100	60	40	6,9

Material 1.4301/AISI 304 | ø d = for wall plug





I-SYS: Assured Safety


The German Institute for Building Technology in Berlin granted general planning approval for different I-SYS end connections with different types and diameters of stainless steel cables. This approval is like a quality seal, bearing witness to the quality of I-SYS and facilitating implementation of the products.

All the latest information is available in the brochure: Carl Stahl General Planning Approval.



Key

All information regarding diameters, adjustments etc. is given in millimetres.

<p>c</p> <p>For internal threads: Measurement for screw-in depth in millimetres.</p>		<p>kN</p> <p>Kilo Newton: Unit of measurement for minimum breaking loads of cables and breaking load of end connections with horizontal tension force.</p>
<p>Fax</p> <p>Maximum axial force in kN</p>	<p>Se</p> <p>End of cable</p>	<p>MQ</p> <p>Metal cross-section of cables and wires in mm² The metallic cross-section is the sum of the nominal cross-sections of all individual wires.</p>
<p>Adjustment</p> <p>Starting point for adjustment: + means lengthening due to less tension - means shortening due to increased tension</p>		<p></p> <p>Self assembly Individual components and cables are assembled on site. With end connections and ferrules for self assembly, the cables need to be degreased first.</p>
<p>Sk</p> <p>Rope constructions for cable assemblies The cable assemblies are generally made from round wire cable.</p>		<p>KI</p> <p>Cable assembly length Positions for measuring</p>

In principle, stainless steel is corrosion resistant, not corrosion-proof. Care must be taken to preserve the corrosion resistant properties. Avoid storing, handling, and installing with carbon steel tools and equipment. Promptly remove grime, soil, and loose iron or carbon dust with mild soap and water. Avoid cleaners containing chlorine, especially in urban and salt water environments.

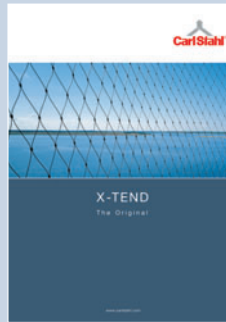
Architecture Programs



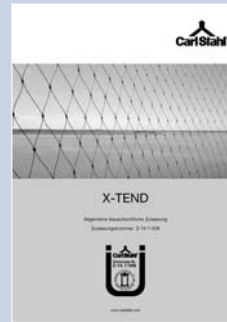
I-SYS, the stainless steel architecture program, comprises around 1,200 individual parts, cable assemblies and applications.



I-SYS General Planning Approval contains detailed information and technical details of the approved products. Available in German only.



X-TEND combines stainless steel cables with ferrules to create three-dimensionally workable mesh for balustrades, façades, buildings and designs.



X-TEND General Planning Approval contains detailed information and technical details of the approved products. Available in German only.



Posilock unites sophisticated systems made of stainless steel cables and individual parts for creative applications in shop and trade fair fittings.

Credits

© 2007 Carl Stahl GmbH | Postweg 41 | 73079 Süssen | Germany | www.carlstahl.com

Art direction and editorial staff Büro Blank Communication Services, Holzgerlingen

Photos Peter Kißner, Hausen | Kuhnle + Knödler, Radolfzell | Axel Waldecker, Murr

Exclusion of liability All information is given with the intention of accuracy and completeness. Carl Stahl would appreciate any information regarding errors or missing items. All information in this catalogue is valid at the time of printing. We reserve the right to make changes related to continuous improvements of the product range or errors.

Copyright This catalogue is the intellectual property of Carl Stahl GmbH. Carl Stahl GmbH expressly retains the rights of ownership and copyright with regard to information in the catalogue. Reprinting and reproduction of the text, including in part, is only permitted with the prior written permission of Carl Stahl GmbH.



